



FIRESTOPPING

Products for Electrical and Datacom Applications

*The Industry's Most Complete Line of Firestop Products for
High-Traffic™ and Permanent Firestopping Applications*



SPECIFIED TECHNOLOGIES INC.

Specified Technologies, Inc. (STI) is an industry leader solely committed to the development of innovative, reliable firestopping solutions that help stop the spread of fire, smoke and toxic fumes.

For over 25 years, our management team has worked hand in hand with the construction industry to create innovative firestop solutions for all types of new construction and retrofit applications. We offer the broadest range of UL® Classified Systems — more than any other manufacturer. We keep material requirements to a minimum and we design systems with the installer in mind. The result is less labor and significantly lower installed costs.

Innovative Firestop Solutions for Electrical and Datacom Applications

Service, Technology, Innovation

Polymer jacketed cables found in datacom applications are considered to be combustible. Combustible penetrants pose a potentially greater risk than noncombustible penetrants as they may melt or burn out causing openings to develop within a firestop. Intumescent firestop technology (expands with heat) is required to compensate for the loss of mass when jackets burn away. Additionally, while some datacom firestop installations are permanent, future growth requirements to accommodate cable moves, adds, and changes will likely require a retrofittable system. The materials and methods selected to seal these penetrations must be chosen with these performance requirements in mind.

High-Traffic Firestop Products

Retrofittable product choice is generally driven by penetration opening size and cable change frequency. At STI we refer to these retrofittable datacom penetrations as High-Traffic™ openings. The need for communications and data cabling in today's buildings continues to explode. Openings made to accommodate the building's original cable requirements quickly fill up, making cable moves, adds, and changes a major task. STI engineers its High-Traffic products from the ground up to meet your needs. Simply stated, you need to be able to move, add, or change cables and have re-enterable firestop products and systems that allow you to do it quickly and economically. Our High-Traffic firestop products can handle all of your cable penetration requirements.

Choosing the Right Product for Your High-Traffic™ Application

The chart below outlines the product application choices.

Cable Change Frequency	Penetration Opening	
	Small	Large
More Changes	EZ-Path®	EZ-Path®
Less Changes	Putty Ready™ Sleeve	Pillows

Firestop Products for Permanent Installations

Sealant systems installed in and around cables are generally considered a permanent installation and are appropriate for external seals including conduits and sleeves, and where cables will not be changing. Combustible penetrants in all construction need the protection that only a high quality intumescent firestop sealant can provide. For cable penetrations where re-entry is neither required nor desirable, SpecSeal® intumescent sealants provide maximum firestopping protection. Where non-combustible penetrants exist, our Series LC150 is a high quality, non-halogenated firestopping sealant designed for through-penetrations.

Triple S® Intumescent Sealant

LCI Intumescent Sealant

LC150 Endothermic Sealant

FIRESTOP SEALANTS



Triple S® Intumescent Sealant — Pg. 4

Premium grade, water-based firestop caulk featuring STI's patented two-stage intumescent technology. The perfect choice for the broadest array of combustible and non-combustible electrical penetrants requiring a permanent, durable seal.



LCI Intumescent Sealant — Pg. 4

Standard grade, water-based firestop caulk engineered to address most common combustible and noncombustible electrical applications typically found in light commercial construction.



LC Endothermic Sealant — Pg. 5

An economical, non-intumescent, non-halogenated caulk for non-combustible penetrants.



PENSIL® 300 Silicone Products — Pg. 5

A 100% silicone firestop caulk engineered to rapidly cure and resist washout (W Ratings) when used in exposed applications.

COMPOSITE SHEET



Intumescent Composite Sheet — Pg. 6

Lightweight, easily fabricated panel surface mounts to walls and floors to provide a neat, clean seal for medium to large openings typically used for cable trays, bus ducts, and conduit banks.

FIRESTOP MORTAR



SSM Firestop Mortar — Pg. 6

A strong, lightweight, cementitious mortar designed for large openings typically used for cable trays or banks of conduits.

FIRESTOP PUTTY



SSP Intumescent Putty — Pg. 7

Non-hardening intumescent putty is easily installed and removed making it the perfect choice for cable penetrations requiring occasional retrofitting.

FIRESTOP PILLOWS



SSB Intumescent Firestop Pillows — Pg. 7

Compressible cushions are easily installed and removed. The perfect firestop solution for medium to large openings including cables bundles, cable trays, bus ducts and multiple conduits.

PATHWAYS



EZ-Path® Fire Rated Pathway — Pg. 8-11

A mechanical cable pathway system utilizing a self-contained, self-sealing firestop system. Easy moves, adds, and changes with no firestopping required ever. Three sizes and a full range of accessories adapt this system to virtually any application.

FIRESTOP SLEEVES



Ready™ Sleeve — Pg. 12

Complete firestop sleeve assembly for new cable installations. Includes all mounting hardware and internal and external firestop sealing materials. Available in 1", 2", and 4" sizes with standard or large escutcheon plates.



Ready™ Split Sleeve — Pg. 12

Complete firestop split sleeve assembly for new or existing cable installations. Includes all mounting hardware and internal and external firestop sealing materials. Available in 1", 2", and 4" sizes.

PUTTY PADS



SSP Putty Pads — Pg. 13

When used with both metallic and non-metallic switch and receptacle boxes, pads are UL Tested and Classified to permit larger boxes and reduced spacing.

ELECTRICAL BOX INSERTS



Powershield™ Electrical Box Inserts — Pg. 13

When used within metallic switch and receptacle boxes, inserts are UL tested and Classified to permit larger boxes and reduced spacing.

FIRE PROTECTIVE CABLE COATING



CS Cable Spray — Pg. 14

Water-based, spray applied coating used to provide short term circuit integrity and improved flame spread characteristics for grouped electrical cables.

ACCESSORIES



Firestop Accessories — Pg. 14

STI has several accessories available for installing firestop. Caulk tubes, mineral wool boards and even warning labels for labeling your barriers.



TRIPLE S® INTUMESCENT SEALANT



Premium grade, water-based firestop caulk featuring STI's patented two-stage intumescent technology. The perfect choice for the broadest array of combustible and non-combustible electrical penetrants requiring a permanent, durable seal.

FEATURES & BENEFITS:

- Suitable for all forms of construction including industrial and complex commercial and institutional facilities.
- Patented two-stage intumescent technology.
- Shear thins when caulked to easily seal between cables and conduits.
- Broadest range of tested and compliant firestop systems.
- UL Tested and Classified for all common constructions up to and including 4 hours. FM Approved.
- Acoustically tested and proven to reduce sound transmission.
- UL leakage tested (L Ratings).
- Water-based - easy cleanup, installation and disposal.
- Safe to use, low VOCs, no solvents, non-halogenated.
- Red color for easy identification and inspection.



APPLICATIONS

- Single or multiple metallic conduits & tubing.
- Single or multiple non-metallic conduits & tubing.
- Electrical cables including all common types & sizes.*
- Cable trays & bus ducts.

*Recommended for cables that can be permanently sealed.



ORDERING INFORMATION					
UPC #	Part #	Description	Qty.	Case Qty.	Weight Each - lbs.
01100	SSS100	Intumescent Sealant 10.1 oz. Tube (18.2 Cu. In., 300 ml)	1	12	0.90
01102	SSS102	Intumescent Sealant 2 gal. Pail (462 Cu. In., 7.6 L)	1	n/a	20.00
01105	SSS105	Intumescent Sealant 5 gal. Pail (1155 Cu. In., 19.0 L)	1	n/a	50.00
01103	SSS120	Intumescent Sealant 20 oz. Sausage (36 Cu. In., 592 ml)	1	12	1.55
01129	SSS129	Intumescent Sealant 29 oz. Tube (52 Cu. In., 858 ml)	1	10	2.49



LCI INTUMESCENT SEALANT



Standard grade, water-based firestop caulk engineered to address most common combustible and non-combustible electrical applications typically found in light commercial construction.

FEATURES & BENEFITS:

- Suitable for common forms of construction including light commercial and grouped residential.
- Wide range of tested and compliant firestop systems.
- UL Tested and Classified for all common constructions up to and including 3 hrs.
- Acoustically tested and proven to reduce sound transmission.
- UL leakage tested (L Ratings).
- Water-based - easy cleanup, installation and disposal.
- Safe to use, low VOCs, no solvents, non-halogenated.
- Pale red color for easy identification and inspection.



APPLICATIONS

- Single or multiple metallic conduits & tubing.
- Single or multiple non-metallic conduits & tubing.
- Electrical cables including all common types & sizes.*

*Recommended for cables that can be permanently sealed.



ORDERING INFORMATION					
UPC #	Part #	Description	Qty.	Case Qty.	Weight Each - lbs.
01170	LCI300	Intumescent Sealant 10.1 oz. Tube (18.2 Cu. In., 300 ml)	1	12	0.94
01175	LCI305	Intumescent Sealant 5 gal. Pail (1,155 Cu. In., 19.0 L)	1	n/a	50.00
01172	LCI320	Intumescent Sealant 20 oz. Sausage (36 Cu. In., 592 ml)	1	12	1.59
01179	LCI329	Intumescent Sealant 29 oz. Tube (52 Cu. In., 858 ml)	1	10	2.27





LC ENDOTHERMIC SEALANT



An economical, non-intumescent, non-halogenated caulk for non-combustible penetrants. Provides an economical solution where the application is primarily metallic conduits.

FEATURES & BENEFITS:

- Easy and economical to use.
- UL Tested and Classified.
- Water-based - easy cleanup, installation and disposal!
- Safe to use, low VOCs, no solvents, non halogenated.
- Red color for easy identification and inspection.



APPLICATIONS

- Concrete or masonry floors or walls.
- Multiple metallic conduits & tubing.
- Electrical cables including all common types & sizes.*

*Recommended for cables that can be permanently sealed.



ORDERING INFORMATION					
UPC #	Part #	Description	Qty.	Case Qty.	Weight Each - lbs.
01130	LC150	Endothermic Sealant 10.1 oz Tube 18.2 Cu. In. (300 ml)	1	12	0.94
01135	LC155	Endothermic Sealant 5 gal. Pail 1,155 Cu. In. (19.0 L)	1	n/a	58.00
01133	LC120	Endothermic Sealant 20 oz. Sausage 36 Cu. In. (592 ml)	1	12	1.92
01131	LC129	Endothermic Sealant 29 oz. Tube 52 Cu. In. (858 ml)	1	10	2.60



PENSIL® 300 SILICONE SEALANT



A 100% silicone firestop caulk engineered to rapidly cure and resist washout when used in exposed conditions.

FEATURES & BENEFITS:

- Low modulus - excellent adhesion.
- Reacts with atmospheric moisture to form a tough, durable seal.
- Cures quickly to resist washout.
- UL Tested for W Ratings.
- UL Tested & Classified with ratings up to and including 3 hours.

APPLICATIONS

- Bus ducts.
- Single or multiple metallic conduits & tubing.
- Single or multiple electrical cables.*

*Recommended for cables that can be permanently sealed.



ORDERING INFORMATION					
UPC #	Part #	Description	Qty.	Case Qty.	Weight Each - lbs.
01120	PEN300	Silicone 10.3 oz. Tube (18.5 Cu. In., 304 ml)	1	24	1.10
01125	PEN305	Silicone 5 gal. Pail (1,155 Cu. In., 19.0 L)	1	n/a	56.00
01126	PEN305SL	Self-Leveling Silicone 5 Gal. Pail (1,155 Cu. In., 19.0 L)	1	n/a	56.00



FIRESTOP COMPOSITE SHEET

COMPOSITE SHEET



Lightweight, easily fabricated panels surface mount to walls and floors to provide a neat, clean firestop seal for medium to large openings typically used for cable trays, bus ducts, and conduit banks.

FEATURES & BENEFITS:

- Easier to use. Half the weight and thickness of traditional panel products.
- Easier to cut and fabricate using common sheet metal tools.
- Expands up to 15X original thickness when burned.
- Superior air leakage ratings!
- Broad base of tested systems.
- UL Classified (up to 4 hr.)
- FM Approved.



APPLICATIONS

- Medium to large openings through common constructions.
- Single or multiple cable trays for power, voice, data.
- Bus ducts.
- Multiple metallic conduits & tubing.
- Multiple mixed penetrants of many types.
- Blank Openings (penetrants removed).
- Suitable for clean room/area environment.
- Combine with the EZ-PATH® System for cable penetrations through large openings.

ORDERING INFORMATION					
UPC #	Part #	Description	Qty.	Case Qty.	Weight Each - lbs.
11628	CS1628	16 x 28 in. (41 x 71 cm) Composite Sheet	1	2	4.40
12436	CS2436	24 x 36 in. (61 x 92 cm) Composite Sheet	1	2	8.40
13636	CS3636	36 x 36 in. (92 x 92 cm) Composite Sheet	1	2	12.60
13641	CS3641	36 x 41 in. (92 x 104 cm) Composite Sheet	1	2	14.40
15228	CS2852	28 x 52 in. (71 x 132 cm) Composite Sheet	1	2	14.20



FIRESTOP MORTAR

SSM FIRESTOP MORTAR



Strong, lightweight, cementitious mortar mixes with water to seal medium to large openings typically used for cable trays or banks of conduits.

FEATURES & BENEFITS:

- Light weight/low density - less forming required. Easier retrofit!
- Economical - highest yield per pound means lower installed cost.
- Combines with pillows for an economical High-Traffic™ firestop solution.
- Wide range of applications - includes aluminum cable tray.
- Red color for easy identification and inspection.
- Chemical adhesion reduces the need for expensive and time-consuming concrete fasteners.
- Versatile performer for a wide range of complex applications.
- UL Classified (up to 3 hr.).
- FM Approved.



APPLICATIONS

- Concrete or masonry floors or walls.
- Multiple metallic conduits & tubing.
- Cable trays (alone or combined with firestop pillows).
- Electrical cables including all common types & sizes.

*Recommended for cables that can be permanently sealed.



ORDERING INFORMATION					
UPC #	Part #	Description	Qty.	Case Qty.	Weight Each - lbs.
04106	SSM106	Mortar 6 gal. Pail (22 Lbs., 10 Kilos)	1	n/a	24.00
04200	SSM22B	Mortar Bag (22 Lbs., 10 Kilos)	1	n/a	23.00



FIRESTOP PUTTY

SSP INTUMESCENT FIRESTOP PUTTY



Non-hardening, intumescent putty is easily installed and removed making it the perfect choice for cable penetrations requiring occasional retrofitting.

FEATURES & BENEFITS:

- Non-hardening for easy installation and retrofitting of cables.
- Two-stage intumescence provides aggressive expansion.
- Highly adhesive: stays put!
- Unaffected by humidity, condensation, water.
- Soft, pliable, easy to install.
- Tested and proven acoustical properties.
- No tools required.
- UL Classified (up to 3 hr.)
- FM Approved.



APPLICATIONS

- Small to medium openings through common constructions.
- Single or multiple cables for power, voice, data.
- Single or multiple cable trays for power, voice, data.
- Sleeved openings for cable bundles
- Conduits.

ORDERING INFORMATION					
UPC #	Part #	Description	Qty.	Case Qty.	Weight Each - lbs.
02100	SSP100	Putty 36 Cu. In. Tube (.6 L)	1	6	2.30
02200	SSP28	Putty 24 Cu. In. Tube (.39 L)	1	1	1.85



FIRESTOP PILLOWS

SSB INTUMESCENT FIRESTOP PILLOWS



Compressible cushions can be easily installed and removed. The perfect firestop solution for medium to large openings including cable bundles, cable trays, bus ducts and multiple conduits.

FEATURES & BENEFITS:

- Intumescent - expands in all directions for a tough, tight seal.
- Re-installable for easy retrofitting of cables.
- Single side application makes installation easy for tough access openings.
- Heat-sealed poly cover protects core and makes pillows slide in and out with ease.
- Superior air leakage ratings!
- Broad base of tested systems.
- UL Classified (up to 4 hr.).
- FM Approved.



APPLICATIONS

- Medium to large openings through common constructions.
- Loose cable for power, voice, data.
- Single or multiple cable trays for power, voice, data.
- Bus ducts.
- Multiple metallic conduits & tubing.
- Multiple, mixed penetrants of all types.

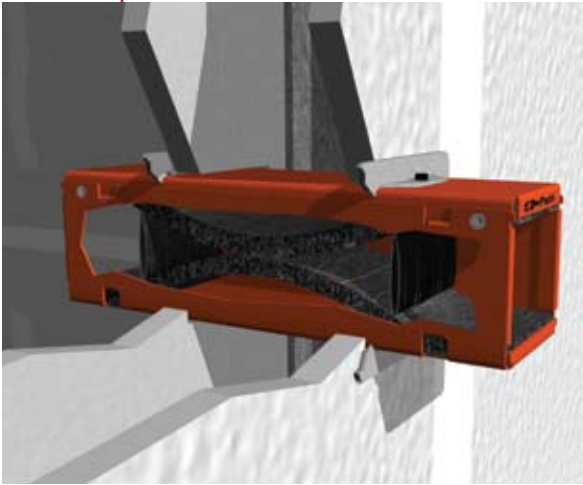


ORDERING INFORMATION					
UPC #	Part #	Description	Qty.	Case Qty.	Weight Each - lbs.
06140	SSB14	Firestop Pillow 1"x 4"x 9" (2.5 x 10 x 23 cm)	1	20	0.18
06240	SSB24	Firestop Pillow 2"x 4"x 9" (5.0 x 10 x 23 cm)	1	10	0.27
06260	SSB26	Firestop Pillow 2"x 6"x 9" (5.0 x 15 x 23 cm)	1	22	0.35
06360	SSB36	Firestop Pillow 3"x 6"x 9" (7.6 x 15 x 23 cm)	1	16	0.48





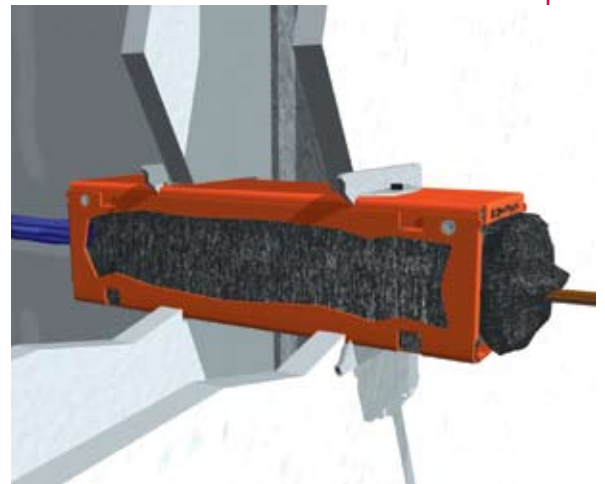
CONTINUOUSLY STOPPING FIRE - WITHOUT CONTINUOUSLY FIRESTOPPING



- Maximum resistance to fire and smoke whether empty or 100% visually filled.
- Assures fire and smoke protection with every new or retrofit cable installation.
- Superior fire and smoke leakage vs. standard sleeve and putty systems.
- Unlike conventional sleeve and putty system, EZ-Path® remains fire and smoke compliant 100% of the time!
- U.S. Patent 6,732,481.

MAXIMUM FIRE AND SMOKE PROTECTION

- Built-in firestopping system automatically adjusts to the number of cables installed—assures it is firestopped — even at maximum cable loading.
- Intumescent material rapidly responds to flames or heat by quickly sealing the pathways and preventing the passage of flames and smoke.
- Excellent F, T & L Ratings.
- Published total leakage area values - no additional putty or pieces to maintain ratings.
- UL® Classified and FM Approved in accordance with ASTM E814 (UL 1479).
- UL systems are available for up to 4 hour rated floor and wall constructions.



SPECIFICATIONS



FIRESTOP DEVICE FOR USE IN THROUGH-PENETRATION FIRESTOP SYSTEMS. SEE UL DIRECTORY OF PRODUCTS CERTIFIED FOR CANADA AND UL FIRE RESISTANCE DIRECTORY.

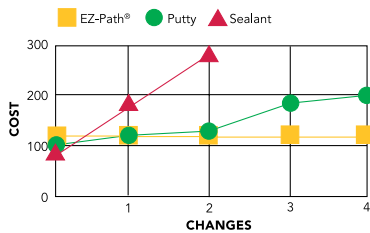


All data, video, and communications cable bundles shall utilize an enclosed fire rated pathway device wherever said cables penetrate rated walls. The fire-rated pathway shall contain a built-in fire sealing system sufficient to maintain the hourly fire rating of the barrier being penetrated. The self-contained sealing system shall automatically adjust to the installed cable loading and shall permit cables to be installed, removed, or retrofitted without the need to adjust, remove or re-install firestop materials. The pathway shall be UL® Classified and/or FM Systems Approved and tested to the requirements of ASTM E814 (UL1479).

Specified Divisions

DIV. 7	07 84 00	Penetration Firestopping
DIV. 26	26 00 00	Electrical
DIV. 27	27 00 00	Communications

PAYS FOR ITSELF IN A FEW CHANGES... A ZERO MAINTENANCE SOLUTION



When compared to traditional sleeves sealed with sealant or putty, EZ-Path® will have paid for itself in just three cable changes or less. The savings will increase with each additional cable change.

- All-in-one design installs in minutes.
- Conveniently packaged kits for easy installation — no additional parts to order.
- Splits apart for old work.
- Wide range of accessories.
- Group pathways for additional capacity.
- Organizes and manages cables.
- Clean, professional, engineered appearance.
- Easy moves, adds and changes.
- Can be installed as the wall is being built.

CHOOSE THE RIGHT EZ-PATH® CONFIGURATION FOR YOUR CABLING NEEDS!



	Series 22	Series 33	Series 44
1 Height x Width Inches (mm)	1.5" x 1.5" (38 mm x 38 mm)	3.0" x 3.0" (76 mm x 76 mm)	4" x 4-5/8" (102 mm x 118 mm)
Length Inches (mm)	10.5" (267 mm)	10.5" (267 mm)	14" (356 mm)
Volume Expansion	40X	16X	16X
Can be Ganged	--	Up to 7	Up to 5 in walls Up to 16 in floors
Can be Lengthened	--	6" (152 mm) increments	--
Insert into Cored Hole	2" (51 mm)	4" (102 mm)	6" (153 mm)
Attached to Conduit	--	4" (102 mm)	--
Fire Rated in Walls	Up to 4 hours	Up to 4 hours	Up to 4 hours
Fire Rated in Floors	--	Up to 4 hours	Up to 4 hours
Approx. Max Cable Capacity	25 ±	120 ±	244 ±
Approx. Max Cable Capacity (Ganged)	--	840 ±	1,220 ±
Approx. Max Cable Capacity (Grid)	--	--	3,904 ± in floors

Cable capacity estimates are based upon using CAT5. Cable diameters vary widely by manufacturer. Consult STI's cable estimator online for accurate estimates.

www.stifirestop.com/EZ-Path



FIRESTOPPING IS NO LONGER THE PROBLEM... IT'S THE SOLUTION!



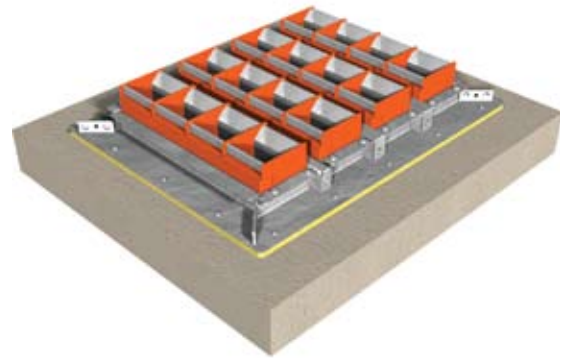
- Organize cables by type, use or trade.
- Install in walls or floors to provide managed portals to route cables.
- Install one or gang them up for additional capacity and better cable organization!



All pathway kits are conveniently packaged with 22, 33, and 44 Series EZ-PATH® Fire Rated Pathways, plates, gaskets and labels for installation!

MODULAR FLOOR GRID SYSTEM

- An EZ-Path® Solution for high volume cable penetrations through floors.
- A bolt-in solution for riser applications that brings the safety and simplicity of EZ-Path® to your vertical cable installations.
- The EZ-Path® Modular Floor Grid System can handle literally thousands of cables.
- Modular Floor Grid Systems utilize the high volume, EZ-Path® 44 Series Pathways installed in banks of four to provide your cabling systems with room to grow.



Sturdy steel grids mount one, two or four banks or pathways in built-in slots for a total of up to sixteen pathways through a single floor opening. A single bank Floor Grid comes complete with pathways. Multi-bank Modular Floor Grids are installed with firestop panels sealing each slot. As additional cable capacity is required, firestop panels are removed and pathway modules containing four pathways are installed in each slot.

For our easy-to-use installation guide on the complete EZ-PATH® Fire Rated Pathway product line, contact STI customer service or download a copy at www.stifirestop.com/literature.



ORDERING INFORMATION

UPC 730573-	CATALOG NUMBER	DESCRIPTION	MIN. QTY/ CASE QTY.
Series 22 EZ-Path® Fire-Rated Pathway Kits*			
00022	EZD22	Series 22 - Fire-Rated Pathway Kit	6
Series 33 EZ-Path® Fire-Rated Pathway, Kits, Accessories and Plate Packs*			
00004	EZD33FWS	Series 33 - Fire-Rated Pathway Device	6
00034	EZDP33FWS	Series 33 - Square Kit - Device with square wall plate pack	4
00035	EZDP133CWK	Series 33 - Circular Kit - Device with circular wall plate pack	1
00005	EZD33E	Series 33 - Extension Module	1
00533	EZDP33WR	Series 33 - Retro-Fit Kit - Device with retro-fit wall plate pack	1
00835	EZDP133FK	Series 33 - Kick in Kit - Device with kick-in plate pack	1
00235	EZDP233GK	Series 33 - Two-Gang Kit - Two (2) Devices with two-gang plate pack	1
00335	EZDP333GK	Series 33 - Three-Gang Kit - Three (3) Devices with three-gang plate pack	1
00435	EZDP433GK	Series 33 - Four-Gang Kit - Four (4) Devices with four-gang plate pack	1
00436	EZDP433GK-C	Series 33 - Color Coded Four-Gang Kit Four (4) Devices (1-orange, 1-blue, 1-yellow, 1-white) with four-gang plate pack	1
00735	EZDP733GK	Series 33 - Seven-Gang Kit - Seven (7) Devices with seven-gang plate pack	1
00036	EZDP133CAK	Series 33 - Conduit Attachment Kit-Device with conduit attachment plate pack	1
00137	EZP133CW	Series 33 - Circular Wall Plate Pack	1
00133	EZP133W	Series 33 - Single Square Wall Plate Pack	1
00233	EZP233W	Series 33 - Double Wall Plate Pack	1
00333	EZP333W	Series 33 - Triple Wall Plate Pack	1
00433	EZP433W	Series 33 - Four-Gang Plate Pack	1
00733	EZP733W	Series 33 - Seven-Gang Plate Pack	1
00135	EZP133PC	Series 33 - One Pair (2) Positioning Clamps	1
00833	EZP133K	Series 33 - Single Kick-In Plate Pack - (For use with floor applications)	6
00535	EZP133R	Series 33 - Retro-Fit Mounting Plate Pack	1
00138	EZP133CA	Series 33 - Conduit Attachment Plate Pack	1
00933	RCM33	Series 33 - One Pair (2) Radius Control Modules	1
Series 44 EZ-Path® Fire-Rated Pathway, Kits, Grid Assemblies, and Plate Packs*			
00007	EZD44	Series 44 - Fire-Rated Pathway Device	4
00044	EZDP44	Series 44 - Fire-Rated Pathway Kit - Device with single wall plate pack	1
00045	EZDP144FK	Series 44 - Floor Kit - Device with floor plate pack	1
00444	EZDG444	Series 44 - Single Bank Floor Grid - Four (4) Devices with floor frame	1
00048	EZD444MB	Series 44 - Single Bank of Devices - Four (4) Devices with hanger bracket	1
00845	EZDG844	Series 44 - Multi-slot Frame Kit for 8 Pathways - (Includes eight (8) Series 44 devices with EZG844)	1
00645	EZDG1644	Series 44 - Multi-slot Frame Kit for 16 Pathways - (Includes sixteen (16) Series 44 devices with EZG1644)	1
00144	EZP144W	Series 44 - Single Wall Plate Pack	1
00544	EZP544W	Series 44 - Multi-Gang Wall Plate Pack	1
00834	EZP144F	Series 44 - Split Floor Plate Pack	1
00844	EZG844	Series 44 - Multi-Slot Frame for Eight (8) Pathways	1
00644	EZG1644	Series 44 - Multi-Slot Frame for Sixteen (16) Pathways	1
*All Kits include appropriate quantity of pathways, wall plates, gaskets, labels, required set screws and an allen key. **All plate packs include wall plates, gaskets, labels, required set screws and an allen key.			

READY™ SLEEVE



A complete code compliant firestop sleeve assembly for new cable installations. Includes all mounting hardware and internal and external firestop sealing materials. Available in 1", 2", and 4" sizes with standard or large escutcheon plates.

FEATURES & BENEFITS:

- Complete! Includes sleeve, all mounting hardware, firestopping materials.
- Saves money by reducing expensive shop and field labor.
- Standard and large escutcheons available.
- Meets code requirements for internal/external firestop sealing.
- Meets code requirements for wall attachment.
- Built-in bushings protect cables.*
- Includes SpecSeal® Series SSP Intumescent Firestop Putty sufficient for 1" (25 mm) depth at both ends.
- UL Classified (up to 4 hr.)

* Standard for 2" (60 mm OD) and 4" (114 mm OD) sizes. Separate bushing provided for 1" (25 mm).



APPLICATIONS

- Protect, support and seal cables routed through rated and non-rated walls & floors.
- All common constructions up to 10" (250 mm) thick.
- Available trade sizes 1" (33 mm OD), 2" (60 mm OD), 4" (114 mm OD).
- Standard small escutcheons for accurate gypsum board openings.
- Large escutcheons for concrete or masonry openings.



ORDERING INFORMATION					
UPC #	Part #	Description	Qty.	Case Qty.	Weight Each - lbs.
20100	FS100	1 in. (25 mm) Firestop Sleeve	1	6	1.00
20200	FS200	2 in. (51 mm) Firestop Sleeve	1	6	2.00
20400	FS400	4 in. (102 mm) Firestop Sleeve	1	6	4.00
20201	FS201	2 in. (51 mm) Firestop Sleeve w/ large escutcheon plates	1	n/a	2.90
20401	FS401	4 in. (102 mm) Firestop Sleeve w/ large escutcheon plates	1	n/a	4.80



READY™ SPLIT SLEEVE



Ready™ Sleeve convenience for existing cable installations. Split sleeve and two-piece wall plates allow sleeve to be assembled around cables and locked into the wall or floor. Available in 1", 2", and 4" sizes.

FEATURES & BENEFITS:

- Complete! Includes split sleeve, all mounting hardware, firestopping materials.
- Over-sized plates for larger or irregular openings.
- Built-in bushings protect cables.
- Meets code requirements for internal/external firestop sealing.
- Optional wall attachment points provided for sleeve stabilization.
- Includes SpecSeal® Firestop Putty as well as split external firestop gasket.
- UL Classified (up to 4 hr.).



APPLICATIONS

- New or existing cable installations through walls or floors.
- All common constructions up to 10" (250 mm) thick.
- Available trade sizes 1" (33 mm OD), 2" (60 mm OD), 4" (114 mm OD).
- Oversized or irregular openings.



ORDERING INFORMATION					
UPC #	Part #	Description	Qty.	Case Qty.	Weight Each - lbs.
21000	FSR100	1 in. (25 mm) Split Firestop Sleeve	1	4	1.25
22000	FSR200	2 in. (51 mm) Split Firestop Sleeve	1	4	2.50
24000	FSR400	4 in. (102 mm) Split Firestop Sleeve	1	4	6.25



SSP INTUMESCENT PUTTY PADS



Externally applied to switch and receptacle boxes, pads are UL Tested and Classified to permit larger boxes and reduced spacing in gypsum board walls.

FEATURES & BENEFITS:

- Fits common 4S box with no cutting or trimming.
- Two-Stage intumescence provides aggressive expansion.
- Highly adhesive: stays put.
- Unaffected by humidity, condensation, water.
- Soft, pliable, easy to install.
- Tested and proven acoustical properties.
- Poly liner allows hands-off, clean installation.



APPLICATIONS

- Single & multi-gang metallic boxes up to 14" (356 mm) long.
- A variety of non-metallic boxes.
- Plastic & steel faceplates.
- 1 & 2 hr. wood or steel stud walls.



ORDERING INFORMATION					
UPC #	Part #	Description	Qty.	Case Qty.	Weight Each - lbs.
02200	SSP4S	Putty Pad 7.25" x 7.25" x 3/16"	1	20	0.59
02300	SSP9S	Putty Pad 9.00" x 9.00" x 3/16"	1	20	0.99



ELECTRICAL BOX INSERTS

POWERSHIELD™ ELECTRICAL BOX INSERTS



When used within metallic switch and receptacle boxes, inserts are UL Tested and Classified to permit larger boxes and reduced spacing.

FEATURES & BENEFITS:

- Easy installation! Just peel and stick to inside of box.
- Can be installed before or after wall is closed.
- Non-conductive liner face.
- Easy retrofit installation.
- Low profile for minimum impact on box volume.
- Tested and proven acoustical properties.
- One step installation saves time and labor.



APPLICATIONS

- Single & multi-gang metallic boxes up to 14" (356 mm) long.
- Plastic & steel faceplates.
- 1 & 2 hr. wood or steel stud walls.



ORDERING INFORMATION					
UPC #	Part #	Description	Qty.	Case Qty.	Weight Each - lbs.
02500	EP44	Electrical Box Insert 3 3/4" x 3 3/4" x 1/8" pad	1	20	0.09
02505	EP45	Electrical Box Insert 4-1/4" x 4-1/4" x 1/8" pad	1	20	0.10



CABLE SPRAY



Water-based, spray-applied coating used to provide short term circuit integrity and improved flame spread characteristics for grouped electrical cables.

FEATURES & BENEFITS:

- Easy and economical to use.
- FM Approved.
- Water-based - easy cleanup, installation and disposal.
- Low friction formula - Less pump wear.
- Brushable for touch ups and spot repairs.



APPLICATIONS

- Encapsulate grouped cables.
- Apply as fire breaks in cable tray runs.



ORDERING INFORMATION

UPC #	Part #	Description	Qty.	Case Qty.	Weight Each - lbs.
07104	CS105	Cable Spray 5 gal. (1,155 Cu.In., 19.0 L) Pail	1	n/a	55.00



FIRESTOP ACCESSORIES

STI has several accessories available for installing firestop. Caulk tubes, mineral wool boards and even warning labels for labeling your barriers.



ORDERING INFORMATION

UPC #	Part #	Description	Qty.	Case Qty.	Weight Each - lbs.
05001	SSAMW	Mineral Wool Boards (2) 2'x4'x1.5" Per box (5.08 x 10.16 x 3.81 cm)	1	-	12.00
05020	SSACG	Caulk Gun (11 oz.)	1	4	1.49
05021	SSAQCG	29 oz. Caulk Gun	1	-	2.50
05022	SSASCG	20 oz. Caulk Gun	1	-	2.90
09554	Z1002-892-CG	Firestop Penetration Warning Label (5 3/8" x 4 1/2") (13.65 x 11.43 cm)	1	1000/roll	0.01
03775	SSWFT	Foil Tape 2" x 30'	1	6	0.44

Specify STI for your next project using our Submittal Builder!

Advanced Web-Based Technology is Key to Creating Quick and Easy Submittals

Specified Technologies, Inc.'s web-based Submittal Builder tool (www.stifireshape.com) allows professional firestop submittals to be generated quickly and easily. The first of its kind in the industry, this easy-to-use tool allows users to create a customized submittal from scratch, or to choose one from a list of STI pre-built submittals specially designed for a variety of applications.

Features:

- Search by barrier and penetrant.
- Find the correct UL systems for a specific project.
- Eliminate unsuitable sealing methods or products.
- Offers the best possible solutions arranged by ease of use.
- Quick Search feature locates the UL system by number.

Additional Items automatically included based on your chosen systems:

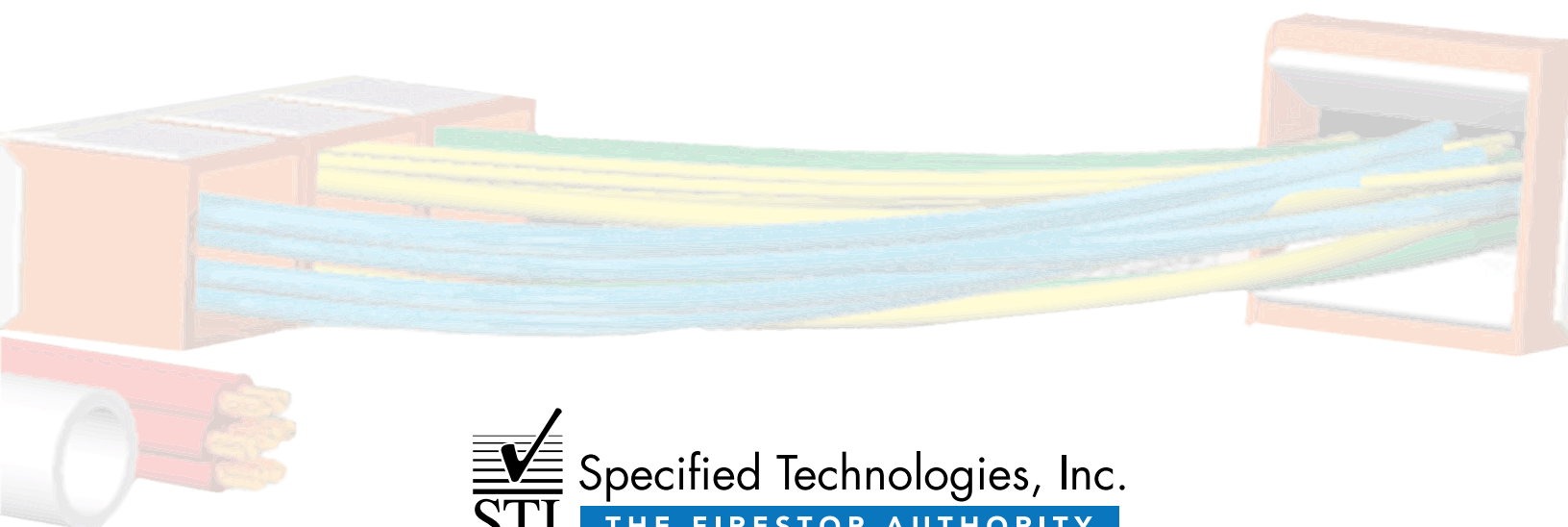
- General Certificate of Compliance
- Product data sheets
- MSDSs

The final submittal, complete with a customized project cover sheet, is generated as a PDF that can be printed or sent via e-mail. Once a submittal is created, it is archived in the user's personal file for future viewing or modification.

For a submittal builder test drive, log onto the STI website at

www.stifireshape.com.





200 Evans Way
Somerville, NJ 08876
Toll Free: 800-992-1180
Fax: 908-526-9623
email: sales@stifirestop.com
www.stifirestop.com

SpecSeal®, EZ-Path® and Triple S® are registered trademarks of Specified Technologies Inc.
High-Traffic™ is a trademarks of Specified Technologies Inc.
PENSIL® is a registered trademark of General Electric Company.
UL® and the UL Mark are a registered trademarks of Underwriter's Laboratories, Inc.

© 2007 Specified Technologies Inc. All rights reserved.