



FIRESTOPPING

Products for Life Safety and Code Compliance

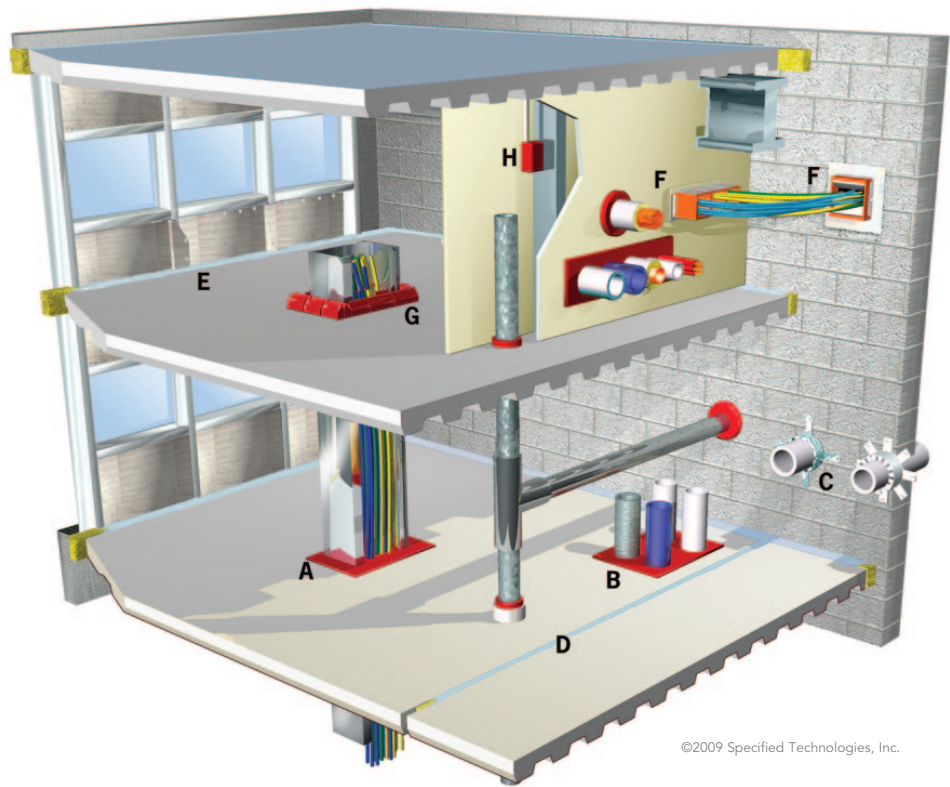
PRODUCT SELECTOR



SPECIFIED TECHNOLOGIES INC.

Specified Technologies Inc. (STI) is an industry leader solely committed to the development of innovative, reliable firestopping solutions that help stop the spread of fire, smoke and toxic fumes.

For over 25 years, our management team has worked hand in hand with the construction industry to create innovative firestop solutions for all types of new construction and retrofit applications. We offer the broadest range of UL® Classified Systems — more than any other manufacturer. We keep material requirements to a minimum and we design systems with the installer in mind. The result is less labor and significantly lower installed costs.



©2009 Specified Technologies, Inc.

FIRESTOP SEALANTS



Triple S® Intumescent Sealant — Pg. 4

Premium grade intumescent firestop sealant featuring STI's patented two-stage intumescent technology. Triple S can be used in most common through-penetrations as well as a variety of membrane penetrations and construction joints.



LCI Intumescent Sealant — Pg. 4

Standard grade intumescent firestop sealant engineered to economically address many common through-penetration applications in light commercial construction.



LC Endothermic Sealant — Pg. 5

High quality, non-halogenated firestopping sealant designed for non-combustible penetrants in through-penetrations and construction joints.

PENSIL® Silicone Products — Pg. 7

A 100% silicone firestop caulk engineered to rapidly cure and resist washout (W Ratings) when used in exposed applications. Also used in construction joint applications.

RESIDENTIAL CAULK



WF300 Firestop Caulk — Pg. 5

Intumescent firestop caulk designed for sealing through-penetrations and gaps in fire resistance-rated wood frame construction.

SmokeBlock® E-136 Caulk — Pg. 5

Meets the requirement of ASTM E136 for use in non-rated applications for fireblocking and draftstopping.

FIRESTOP SPRAYS & JOINT SEALANT



ES Elastomeric Sealant — Pg. 6

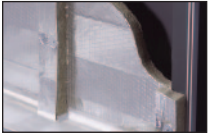
Non-halogenated latex-based sealant designed to provide passive smoke and fire protection in construction joint applications.



AS Elastomeric Spray — Pg. 6

Water-based, spray applied coating for joints and certain through-penetrations in fire-rated walls or floors.

FIRESTOP SPRAYS & JOINT SEALANT



Fast Tack™ Firestop Spray — Pg. 7

Quick dry, firestop spray for use in curtain wall/ edge of slab, and general construction joints that are subject to movement.



PENSIL® Silicone Products — Pg. 7

A 100% silicone firestop caulk engineered to rapidly cure and resist washout (W Ratings) when used in exposed applications. Also used in through penetration applications.

SMOKE & ACOUSTICAL PRODUCTS



Smoke 'N' Sound Acoustical Spray — Pg. 8

Spray grade product for sealing openings in non-rated smoke barriers and partitions.



Smoke 'N' Sound Acoustical Sealant — Pg. 8

Sealant grade product for sealing openings in non-rated smoke barriers and partitions.

CONSTRUCTION JOINT SYSTEM



SpeedFlex™ Joint System — Pg. 9

A quick, economical alternative to using strips of mineral wool forming material in the joint area between the fire-rated wall assembly and the bottom of a steel deck or concrete floor.

FIRESTOP ANGLE



FyreFlange™ Duct Angle — Pg. 9

Duct support and firestopping in one product.

FIRESTOP COLLARS



Firestop Collars — Pg. 10

Ready-to-use firestop devices designed to collapse plastic pipe penetrations when exposed to fire conditions.



Range-Taking Collars — Pg. 10

Factory-manufactured device designed to seal plastic pipes penetrating fire resistance rated walls and floors. SpecSeal® RTC Collars are designed to allow a single collar to fit 3" and 4" trade size pipes (89 and 114 mm) and corresponding 3" and 4" couplings (102 and 127 mm).

WRAP STRIPS & RESTRAINING COLLARS



SSW Wrap Strips — Pg. 11

Intumescent, flexible wrap strips for through-penetrations.

WSC Restraining Collars — Pg. 11

Preformed metal restraining collars for use with SSW Wrap Strips in plastic pipe applications.

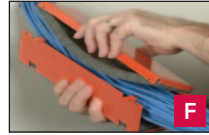
FIRESTOP ACCESSORIES



Firestop Accessories — Pg. 11

STI has several accessories available for installing firestop. Caulk tubes, mineral wool boards and even warning labels for labeling your barriers.

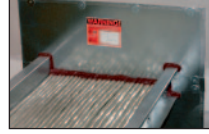
PATHWAYS



EZ-Path® Fire Rated Pathway — Pg. 12-15

A mechanical cable pathway system utilizing a self-contained, self-sealing firestop system. Easy moves, adds, and changes with no firestopping required ever. Three sizes and a full range of accessories adapt this system to virtually any application.

COMPOSITE SHEET



Composite Sheet — Pg. 16

Lightweight, firestop panels effectively seal medium to large openings with a variety of penetrants in fire-rated floors and walls.

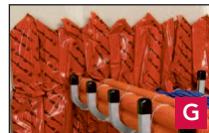
FIRESTOP MORTAR



SSM Firestop Mortar — Pg. 16

Lightweight, cementitious, compound suitable for openings of all sizes in fire-rated construction.

FIRESTOP PILLOWS



SSB Intumescent Firestop Pillows — Pg. 17

Intumescent firestop pillows expand in all directions for a tough, tight seal and easy retrofit for hard-to-fill, multiple penetrants, and large openings.

FIRESTOP PUTTY



SSP Putty — Pg. 17

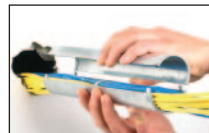
Two-stage intumescent, non-hardening putty for cable and pipe penetrations. Ideal in small to medium sized applications that will require re-entry.

FIRESTOP SLEEVES



Ready™ Sleeve — Pg. 18

Complete firestop sleeve assembly for new cable installations. Includes all mounting hardware and internal and external firestop sealing materials. Available in 1", 2", and 4" sizes with standard or large escutcheon plates.



Ready™ Split Sleeve — Pg. 18

Complete firestop split sleeve assembly for new or existing cable installations. Includes all mounting hardware and internal and external firestop sealing materials. Available in 1", 2", and 4" sizes.

PUTTY PADS



SSP Putty Pads — Pg. 19

When used with both metallic and non-metallic switch and receptacle boxes, pads are UL Tested and Classified to permit larger boxes and reduced spacing.

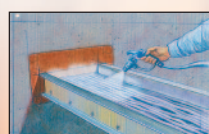
ELECTRICAL BOX INSERTS



Powershield™ Electrical Box Inserts — Pg. 19

When used within metallic switch and receptacle boxes, inserts are UL tested and Classified to permit larger boxes and reduced spacing.

FIRE PROTECTIVE CABLE COATING



Cable Spray — Pg. 19

Water-based, spray applied coating used to provide short term circuit integrity and improved flame spread characteristics for grouped electrical cables.



TRIPLE S® INTUMESCENT SEALANT

Premium, multi-viscosity grade sealant for commercial and industrial applications. The original and still the best multi-purpose sealant.



FEATURES & BENEFITS:

- Patented two-stage intumescent technology - extremely fast and directionalized expansion.
- Water-based - easy installation, cleanup and disposal.
- Excellent smoke seal.
- Low shrinkage.
- Acoustically tested - reduces noise transmission.
- Sandable and paintable (when dry).
- Water-resistant - will not re-emulsify when dry!
- Safe - low VOCs, no solvents, non-halogenated.
- Red color - easy identification and inspection.



ORDERING INFORMATION

UPC #	Part #	Description	Qty.	Case Qty.	Weight Each - lbs.
01100	SSS100	Intumescent Sealant 10.1 oz. Tube (18.2 Cu. In., 300 ml)	1	12	0.90
01102	SSS102	Intumescent Sealant 2 gal. Pail (462 Cu. In., 7.6 L)	1	n/a	20.00
01105	SSS105	Intumescent Sealant 5 gal. Pail (1155 Cu. In., 19.0 L)	1	n/a	50.00
01103	SSS120	Intumescent Sealant 20 oz. Sausage (36 Cu. In., 592 ml)	1	12	1.55
01129	SSS129	Intumescent Sealant 29 oz. Tube (52 Cu. In., 858 ml)	1	10	2.49



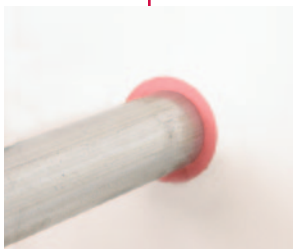
APPLICATIONS

- Metallic pipes including steel, iron, or copper pipe and tubing.
- Nonmetallic pipes, conduits and tubing including PVC, CPVC, PVDF, PEX, PEX-AL-PEX, ABS and PB.
- Cable, cable trays and bus duct.
- HVAC ductwork.
- Insulated pipes.
- Multi-service penetrations including AC line sets, electrical, telephone, or TV service entrance and interior penetrations.
- Complete wood floor firestopping package for electrical, plumbing, HVAC, TV and telephone.



LCI INTUMESCENT SEALANT

A Great Combination of Price and Performance in a Firestop Sealant SpecSeal® Series LCI is a standard grade intumescent sealant specifically engineered and tested to economically address many common firestop applications that represent a significant part of the overall market.



FEATURES & BENEFITS:

- Commercial grade sealant.
- Fast-acting intumescence - expands up to 10X.
- Water-based - easy installation, cleanup, and disposal.
- Excellent smoke seal.
- Water-resistant - will not re-emulsify when dry.
- Acoustically tested - reduces noise transmission.
- Safe - low VOCs, no solvents, non-halogenated.



ORDERING INFORMATION

UPC #	Part #	Description	Qty.	Case Qty.	Weight Each - lbs.
01170	LCI300	Intumescent Sealant 10.1 oz. Tube (18.2 Cu. In., 300 ml)	1	12	0.94
01175	LCI305	Intumescent Sealant 5 gal Pail (1,155 Cu. In., 19.0 L)	1	n/a	50.00
01172	LCI320	Intumescent Sealant 20 oz. Sausage (36 Cu. In., 592 ml)	1	12	1.59
01179	LCI329	Intumescent Sealant 29 oz. Tube (52 Cu. In., 858 ml)	1	10	2.27



APPLICATIONS

- Metallic pipes including steel, iron, or copper pipe and tubing.
- Nonmetallic pipes, conduits and tubing including PVC, CPVC, ABS, and PEX.
- Electrical and electronic cabling including service entrance, power distribution, computer, telephone, and television.
- Metal duct work including HVAC, bath and dryer vents.
- Insulated pipes including heating, cooling, and condensation applications.
- Complete wood floor firestopping package for electrical, plumbing, HVAC, telephone, and television.





LC ENDOTHERMIC SEALANT



LC Sealant is a latex-based, high solids firestop compound. When properly installed, it effectively seals penetration openings against the spread of fire, smoke and toxic gases.

FEATURES & BENEFITS:

- Water-based - easy installation, cleanup and disposal.
- Endothermic fillers - absorb heat and release water.
- High solids formula - no shrinkage!
- Paintable (when dry).
- Safe - low VOCs, no solvents, non-halogenated.
- Red color - easy identification and inspection.
- Excellent caulking properties along with high build capabilities.
- Excellent smoke seal.
- Flexible!



ORDERING INFORMATION

UPC #	Part #	Description	Qty.	Case Qty.	Weight Each - lbs.
01130	LC150	Endothermic Sealant 10.1 oz Tube 18.2 Cu. In. (300 ml)	1	12	0.94
01135	LC155	Endothermic Sealant 5 gal. Pail 1,155 Cu. In. (19.0 L)	1	n/a	58.00
01133	LC120	Endothermic Sealant 20 oz. Sausage 36 Cu. In. (592 ml)	1	12	1.92
01131	LC129	Endothermic Sealant 29 oz. Tube 52 Cu. In. (858 ml)	1	10	1.92



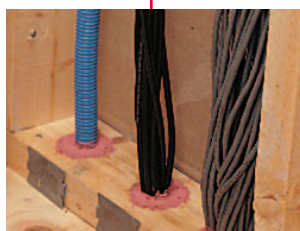
APPLICATIONS

- Piping: non-combustible steel, iron, cast iron and copper up to 24" in diameter.
- Complex multiple penetrants
- Communication cabling systems.
- Construction joints.
- HVAC ducts.



RESIDENTIAL CAULKS

WF300 INTUMESCENT FIRESTOP CAULK



BlazeStop™ Series WF300 Firestop Caulk is designed for use in sealing through-penetrations and gaps in fire resistance-rated wood frame construction.

FEATURES & BENEFITS:

- Economical - delivers maximum fire protection at the right price.
- Water-based - easy installation, clean-up and disposal.
- Water-resistant - will not re-emulsify.
- Intumescent - expansion fills gaps or voids caused by wood shrinkage, or burning or melting of combustible materials.
- Meets ASTM E814 (ANSI/UL 1479).
- Acoustically tested - reduces noise transmission.



ORDERING INFORMATION

UPC #	Part #	Description	Qty.	Case Qty.	Weight Each - lbs.
09710	WF310	Wood Frame Caulk 10.1 oz. Tube (18.2 Cu. In., 300 ml)	1	12	0.94
09705	WF305	Wood Frame Caulk 5 gal. Pail (1,155 Cu. In., 19.0 L)	1	n/a	58.00
09720	WF320	Wood Frame Caulk 20 oz. Sausage (36 Cu. In., 592 ml)	1	12	1.92



APPLICATIONS

- Through-penetrations and gaps in wood frame construction.



SMOKEBLOCK® E-136 CAULK



SmokeBlock® Caulk is a non-combustible caulking product that meets the requirements of ASTM E 136 for use in non-rated applications for fireblocking and draftstopping.

FEATURES & BENEFITS:

- Up to 1000°F and more severe one-time exposures.
- Light red color - easy identification and inspection.
- Quality non-sag sealer.
- Water-based - easy installation, clean-up and disposal.
- Construction grade quality - no shaking or mixing required.
- Adheres to wood and masonry building materials.
- Conforms to the Model Energy Code - minimizes airflow within the wall.



APPLICATIONS

- Non-rated construction.
- Wood frame walls and floors.
- Building structures that do not exceed 3 stories.
- Wherever E-136 materials are required.



ORDERING INFORMATION

UPC #	Part #	Description	Qty.	Case Qty.	Weight Each - lbs.
01160	SB100	Draft, Smoke and FireBlocking Sealer 10.1 oz. (300ml)	1	12	1.21

ES ELASTOMERIC SEALANT

Flexible Firestop Protection for Fire Rated Joints.



FEATURES & BENEFITS:

- Elastomeric - allows movement.
- Water-based - easy installation, clean up and disposal.
- Auto-bonding.
- Compatible with AS Spray for applications or repairs.
- Safe - low VOCs, no solvents, non-halogenated.
- Water-resistant - will not re-emulsify when dry.
- Acoustically tested - reduces noise transmission.



See compatible
spray grade AS
Spray



ORDERING INFORMATION

UPC #	3Part #	Description	Qty.	Case Qty.	Weight Each - lbs.
08100	ES100	Elastomeric Sealant 10.1 oz. Tube (18.2 Cu. In., 300 ml)	1	12	1.12
08105	ES105	Elastomeric Sealant 5 gal. Pail (1, 155 Cu. In., 19.0 L)	1	n/a	62.00
08103	ES120	Elastomeric Sealant 20 oz. Sausage (36 Cu. In., 592 ml)	1	12	1.96
08129	ES129	Elastomeric Sealant 29 oz. Tube (52 Cu. In., 858ml)	1	10	3.04



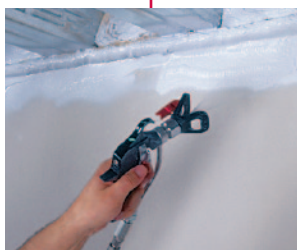
APPLICATIONS

- Control/expansion joints.
- Slab edge conditions.
- Head of wall - concrete fluted and slab.
- Bottom of wall-deck to gypsum wall.
- Joints and gaps in sound barriers.



AS ELASTOMERIC SPRAY

The Professional's Choice for Spray-Applied Firestop Protection of Joints and Penetrations.



FEATURES & BENEFITS:

- Original quick-dry elastomeric formula.
- Water-based - for easy installation, clean-up and disposal.
- Thixotropic - superior high-build properties.
- Safe - low VOCs, no solvents, non-halogenated.
- Auto-bonding - may be re-coated or repaired using ES Caulk.
- Low abrasion - for longer pump life and less maintenance.
- Tested with direct-applied fireproofing.
- Acoustically tested - reduces noise transmission.
- Water-resistant - will not re-emulsify when dry.



See compatible
sealant grade
ES Sealant



ORDERING INFORMATION

UPC #	Part #	Description	Qty.	Case Qty.	Weight Each - lbs.
07107	AS205	Elastomeric Spray (Construction Joints) 5 gal. (1,155 Cu. In., 19.0 L) Pail	1	n/a	50.00

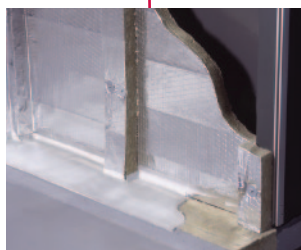


APPLICATIONS

- Slab edge/Curtain wall conditions.
- Head of wall - concrete fluted deck to gypsum wall.
- Head of wall - concrete slab to masonry wall.
- Control/expansion joints (wall & floor).
- Metallic pipes.
- Steel ducts.



FAST TACK™ FIRESTOP SPRAY



The Curtain Wall Firestop Spray that Won't Wash Out!

Silicone/urethane hybrid formula provides fire protection for construction joints, curtain walls, and applications in concrete floors. Fast Tack™ Firestop Spray is well suited for use around penetrants subject to vibration or movement or in areas that may be prone to washouts or exposure to water and moisture.

FEATURES & BENEFITS:

- All-weather formula.
- Skins over quickly to resist water.
- Quick-dry/tack-free in 2-4 hours.
- For use in extreme weather conditions, such as cold or rain.
- Cures below freezing.
- Can be top coated, spray coated or flow applied.
- Auto-bonds for easy touch ups.



ORDERING INFORMATION

UPC #	Part #	Description	Qty.	Case Qty.	Weight Each - lbs.
01192	FT302	Fast-Tack Firestop Spray 2 gal. (7.6 L) Pail	1	n/a	20.00
01190	FT305	Fast-Tack Firestop Spray 5 gal. (19.0 L) Pail	1	n/a	49.00



APPLICATIONS

- Slab Edge/Curtain wall conditions.
- Floor to floor joints.
- Floor to wall joints.



PENSIL® SILICONE SEALANT



A 100% silicone firestop caulk engineered to rapidly cure and resist washout when used in exposed conditions.

FEATURES & BENEFITS:

- Low modulus - allows up to ± 50% movement in joints.
- Auto-bonding - allows fresh sealant to adhere to cured sealant.
- Excellent water-resistance - for water-tight sealing.
- Ozone and UV-resistant - for excellent weathering ability and long service life.
- Excellent chemical resistance - protects in polluted or corrosive atmospheres.
- Excellent adhesion to most building substrates.
- UL tested for W ratings.
- Acoustically tested - reduces noise transmission



ORDERING INFORMATION

UPC #	Part #	Description	Qty.	Case Qty.	Weight Each - lbs.
01120	PEN300	Silicone 10.3 oz. Tube (18.5 Cu. In., 304 ml)	1	24	1.10
01125	PEN305	Silicone 5 gal. Pail (1,155 Cu. In., 19.0 L)	1	n/a	56.00
01126	PEN305SL	Self-Leveling Silicone 5 Gal. Pail (1,155 Cu. In., 19.0 L)	1	n/a	56.00
01123	PEN320	Silicone 20 oz. Tube (36 Cu. In. (592ml)	1	12	1.94

APPLICATIONS

- Through penetrations with high temperatures or movement.
- Electrical, data, or telephone cables.
- Slab Edge/Curtain wall, safing and construction gaps.
- Seismic and expansion joints.
- Curtain wall safing applications.
- Top-of-wall joints.
- Single or multiple metallic pipes, conduits & tubing.



SMOKE 'N' SOUND ACOUSTICAL SPRAY



FEATURES & BENEFITS:

- Water-based - for easy installation and clean-up.
- Excellent smoke seal.
- Acoustically tested - reduces noise transmission.
- High build characteristics.
- Safe. Low VOCs. No solvents! Non-halogenated.
- Economical spray application saves labor!



See compatible
sealant grade
Acoustical
Sealant



APPLICATIONS

- Smoke Control: Where stopping the passage of smoke is necessary such as in smoke barrier walls.
- Noise Control: Where reducing the transmission of sound through wall openings is necessary to help ensure occupant privacy and peaceful environment.
- Infectious/Dust Control: Where reducing the transmission of dust and other airborne particulates through wall openings is necessary.

ORDERING INFORMATION					
UPC #	Part #	Description	Qty.	Case Qty.	Weight Each - lbs.
01155	SNS205	Smoke & Acoustical Spray 5 Gal. Pail (1,155 Cu. In., 19.0 L)	1	n/a	68.00



SMOKE 'N' SOUND ACOUSTICAL SEALANT



Smoke 'N' Sound Acoustical Sealant is a high quality acrylic latex sealant designed for sealing through-penetrations (such as pipes, conduits, cabling, busways, openings) and membrane penetrations (such as p-traps and outlet boxes) in smoke rated walls.

FEATURES & BENEFITS:

- Economical - high performance without the high price!
- Safe for contact with plastics.
- Water-resistant - will not re-emulsify when dry.
- Water-based - easy installation, cleanup, and disposal.
- Remains Flexible - allows movement.
- Acoustically Tested - reduces noise transmission.
- Safe. Low VOCs. No solvents! Non-halogenated.



See compatible
spray grade
Acoustical
Spray



APPLICATIONS

- Smoke Control: Where stopping the passage of smoke is necessary such as in smoke barrier walls.
- Noise Control: Where reducing the transmission of sound through wall openings is necessary to help ensure occupant privacy and peaceful environment.
- Infectious/Dust Control: Where reducing the transmission of dust and other airborne particulates through wall openings is necessary.

ORDERING INFORMATION					
UPC #	Part #	Description	Qty.	Case Qty.	Weight Each - lbs.
01154	SNS105	Smoke 'N' Sound Sealant Yellow - 5 Gal. Pail 1,155 Cu. In. (19.0 L)	1	1	68.00
11154	SNS105W	Smoke 'N' Sound Sealant White - 5 Gal. Pail 1,155 Cu. In. (19.0 L)	1	1	70.80
11151	SNS120W	Smoke 'N' Sound Sealant White - 20 oz. Sausage 36 Cu. In. (592 ml)	1	12	2.06

SPEEDFLEX™ JOINT SYSTEM



Patent 7, 240, 905

The Speedflex Joint System combines a unique backer product with SpecSeal® spray-applied coatings. This system installs over joints rather than within them to allow maximum joint movement ($\pm 100\%$). Excellent repair system for cracked or improperly sealed joints.

FEATURES & BENEFITS:

- Seismic testing.
- Replaces mineral wool in construction joints.
- Tested to ASTM E 1966 and ANSI/UL 2079.
- Clean, professional appearance.
- Can be used to repair cracked joints.
- Use with other SpecSeal® Firestop Products.



APPLICATIONS

- Head of wall construction joints.
- Fluted deck.
- Flat slab.
- Repair/retrofit of cracked joints.



ORDERING INFORMATION

UPC #	Part #	Description	Qty.	Case Qty.	Weight Each - lbs.
08144	SFJP40	Fire Rated Joint Profile Forming Material	1	100	1.00

FIRESTOP ANGLE

FYREFLANGE™ DUCT ANGLE



FyreFlange™ firestop angle provides duct support and firestopping in one product. It has a factory applied intumescent gasket and is designed and engineered to eliminate the need for firestop caulk and backing materials. FyreFlange™ saves time and labor while providing excellent fire protection.

FEATURES & BENEFITS:

- Single stage installation.
- Economical - saves labor.
- Clearly marked for easy inspection.
- Red color for easy identification.
- No additional firestop or backing materials required.
- Eliminates the need for multiple inspections.
- Can be installed over or under duct insulation.



APPLICATIONS

- For use with max. 2 in. thick light density insulation, insulated or non-insulated ducts in walls.
- UL Classified® systems for HVAC ducts through gypsum and masonry walls.

ORDERING INFORMATION

UPC #	Part #	Description	Qty.	Case Qty.	Weight Each - lbs.
32208	FFA2208	Fyreflange Steel Angle 2" x 2" x 96" (51 mm x 51 mm x 244 cm)	1	6	4.25
30022	FFC22	Corner Angle Pack - 8 per pack	1	n/a	.81
30023	FFS22	Fyreflange Splice - 6 per pack	1	n/a	.70



INTUMESCENT FIRESTOP COLLARS



The Right Combination of Price & Performance.

The economical solution for firestopping common plastic pipe that doesn't compromise safety or performance.

FEATURES & BENEFITS:

- Easy installation - uses STI's quick closure design.
- Compact profile - use it in all the tight spots!
- Water-resistant - no water soluble or hygroscopic ingredients.
- Fast-acting expansion (up to 60X) - to seal off burning pipes.
- Safe for contact with plastics.



ORDERING INFORMATION

UPC #	Part #	Description	Qty.	Case Qty.	Weight Each - lbs.
03901	LCC150	For 1.5" (3.8 cm) Dia. Plastic Pipe	1	6	0.22
03902	LCC200	For 2.0" (5.1 cm) Dia. Plastic Pipe	1	6	0.25
03903	LCC300	For 3.0" (7.6 cm) Dia. Plastic Pipe	1	6	0.49
03904	LCC400	For 4.0" (10.2 cm) Dia. Plastic Pipe	1	6	0.73
03600	SSC600	For 6.0" (15.2 cm) Dia. Plastic Pipe	1	2	4.67



APPLICATIONS

- Combustible penetrants (factory manufactured).
- Protects a variety of plastic pipes - PVC, PVC Foam Core (ccPVC), CPVC, ABS, and ABS Foam Core (ccABS).
- Vented (DWV) and closed (electrical conduit and water supply) installations.



RTC INTUMESCENT FIRESTOP COLLARS

Factory-manufactured device designed to seal plastic pipes penetrating fire rated walls and floors.

FEATURES & BENEFITS:

- Adjustable - one collar fits 3" and 4" pipes and corresponding couplings.
- Rapid expansion - closes off burning pipes quickly.
- Small profile - use it in all the tight spots!
- Flexible and durable - no loose flakes (eye hazards).
- Water-resistant - no water soluble or hygroscopic ingredients.
- Economical - lower installed cost.
- High volume char - expands up to 60 times!
- Replaces traditional field-erected wrap strip/restraining collar systems for pipe couplings.
- Reduces inventory - one convenient product covers 3 and 4 in. trade size pipes. Use caulk for 2 in. and smaller trade size pipes!



Patent Pending



ORDERING INFORMATION

UPC #	Part #	Description	Qty.	Case Qty.	Weight Each - lbs.
03835	RTC350	For 3" (7.6 cm) and 4" (10.2 cm) Trade Size Pipe and Corresponding Couplings	1	6	0.70

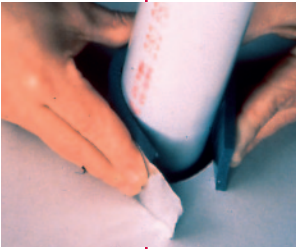


APPLICATIONS

- Protects a variety of plastic pipes and couplings including PVC, PVC Cellular Core (ccPVC), CPVC, ABS, and ABS Cellular Core (ccABS).
- Both vented (DWV) and closed (electrical conduit or water supply) installations.
- All common constructions including concrete floors, concrete over steel deck, concrete walls, concrete block wall, gypsum board/stud walls, wood flooring/ceiling assemblies.



SSW INTUMESCENT WRAP STRIPS



When you need a great solution for firestopping insulated and combustible pipe penetrations choose RED2 Wrap Strip. If your project takes you beyond stock PVC and ABS piping and into the tougher-to-protect plastics like PP, FRPP and PVDF, you need the unmatched power and protection of BLU and BLU2 Wrap Strips!

FEATURES & BENEFITS:

The industry's broadest range of UL® Classified systems including the largest tested plastic pipes!

- Easy installation - soft and flexible, less strip and less fasteners needed.
- Rapid expansion - closes off burning penetrants faster.
- High volume char - significant expansion seals off opening!
- Water-resistant - no soluble or hygroscopic ingredients.
- Economical - 12' roll means no piecing...less waste!
- Highly flexible - no foil...soft...supple...easier to install!
- Versatile performer - for a wide range of complex applications.

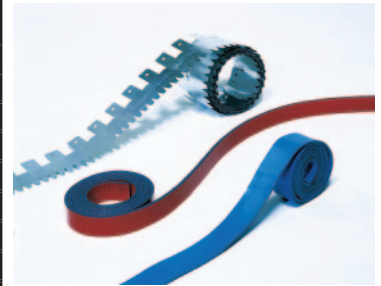


APPLICATIONS

- Firestopping combustible penetrants such as nonmetallic pipes or pipe insulation.
- All common forms of construction - concrete floors, concrete over steel deck, concrete walls, concrete block walls, gypsum board/stud walls, and wood floor/ceiling assemblies.
- Can be used with restraining collars or as a tuck-in.

ORDERING INFORMATION

UPC #	Part #	Description	Qty.	Case Qty.	Weight Each - lbs.
03701	SSWBLU	Blue Wrap Strip (2"Wx3/16"Tx12'L)	1	8	2.83
03711	SSWBLU2	Blue Wrap Strip (2"Wx1/8"Tx12'L)	1	8	1.59
03720	SSWBLU220	1/8" Thick x 1.5" W x 8" L - Precut Wrap Strip for 2" Pipe	25	25	1.64
03730	SSWBLU230	1/8" Thick x 3" W x 11-3/16" L - Precut Wrap Strip for 3" Pipe	25	25	4.74
03740	SSWBLU240	1/8" Thick x 4" W x 14-5/8" L - Precut Wrap Strip for 4" Pipe	25	25	7.82
03125	SSW125	1/8" Thick x 1-1/2" W x 8-1/8" L - Precut Wrap Strip for 2" Pipe	25	-	1.38
03250	SSW250	1/4" Thick x 1-1/2" W x 12-1/8" L - Precut Wrap Strip for 3" Pipe	25	-	5.13
03375	SSW375	3/8" Thick x 1-1/2" W x 16-1/8" L - Precut Wrap Strip for 4" Pipe	25	-	8.88
03702	SSWRED	Red Wrap Strip (1.5" W x 1/4" T x 12' L)	1	10	3.03
03712	SSWRED2	Red Wrap Strip (1.5"Wx1/8"Tx12'L)	1	8	1.14
03750	SSWRC	Metal Restraining Collar 25' (For use with SSWBLU)	1	1	5.06
03752	SSWRC2	Metal Restraining Collar 25' (For use with SSWRED)	1	1	3.76
03753	WSC-8	Preformed Restraining Collar for 6" & 8" Plastic Pipe for use with BLU/BLU2	1	1	1.52
03754	WSC-8RED	Preformed Restraining Collar for 6" Plastic Pipe for use with RED/RED2	1	1	1.06
03760	WSC-12	Preformed Restraining Collar for 10" & 12" Plastic Pipe for use with BLU/BLU2	1	1	2.00



FIRESTOP ACCESSORIES

STI has several accessories available for installing firestop. Caulk tubes, mineral wool boards and even warning labels for labeling your barriers.

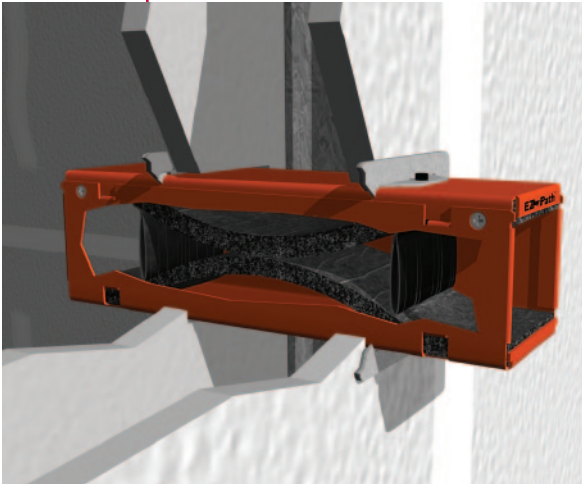
ORDERING INFORMATION

UPC #	Part #	Description	Qty.	Case Qty.	Weight Each - lbs.
05001	SSAMW	Mineral Wool Boards (2) 2'x4'x1.5" Per box (5.08 x 10.16 x 3.81 cm)	1	-	12.00
05020	SSACG	Caulk Gun (11 oz.)	1	4	1.49
05021	SSAQCG	29 oz. Caulk Gun	1	-	2.50
05022	SSASCG	20 oz. Caulk Gun	1	-	2.90
09554	Z1002-892-CG	Firestop Penetration Warning Label (5 3/8" x 4 1/2") (13.65 x 11.43 cm)	1	1000/roll	0.01
03775	SSWFT	Foil Tape 2" x 30'	1	6	0.44





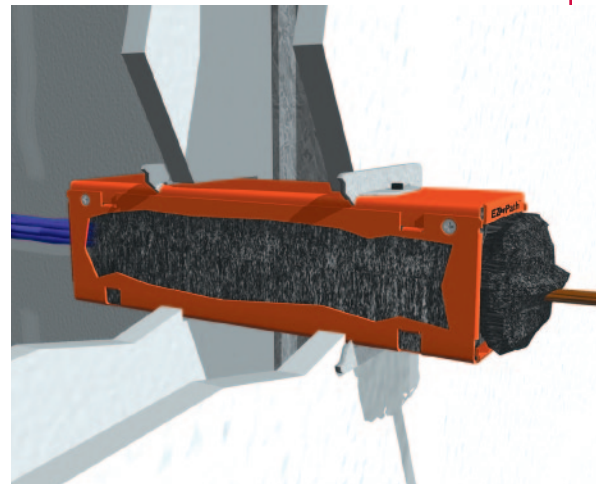
CONTINUOUSLY STOPPING FIRE - WITHOUT CONTINUOUSLY FIRESTOPPING



- Maximum resistance to fire and smoke whether empty or 100% visually filled.
- Assures fire and smoke protection with every new or retrofit cable installation.
- Superior fire and smoke leakage vs. standard sleeve and putty systems.
- Unlike conventional sleeve and putty system, EZ-Path® remains fire and smoke compliant 100% of the time!
- U.S. Patent 6,732,481.

MAXIMUM FIRE AND SMOKE PROTECTION

- Built-in firestopping system automatically adjusts to the number of cables installed — assures it is firestopped — even at maximum cable loading.
- Intumescent material rapidly responds to flames or heat by quickly sealing the pathways and preventing the passage of flames and smoke.
- Excellent F, T & L Ratings.
- Published total leakage area values - no additional putty or pieces to maintain ratings.
- UL® Classified and FM Approved in accordance with ASTM E814 (UL 1479).
- UL systems are available for up to 4 hour rated floor and wall constructions.



SPECIFICATIONS



FIRESTOP DEVICE FOR USE IN THROUGH-PENETRATION FIRESTOP SYSTEMS. SEE UL DIRECTORY OF PRODUCTS CERTIFIED FOR CANADA AND UL FIRE RESISTANCE DIRECTORY.

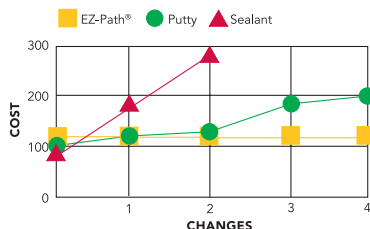


All data, video, and communications cable bundles shall utilize an enclosed fire rated pathway device wherever said cables penetrate rated walls. The fire-rated pathway shall contain a built-in fire sealing system sufficient to maintain the hourly fire rating of the barrier being penetrated. The self-contained sealing system shall automatically adjust to the installed cable loading and shall permit cables to be installed, removed, or retrofitted without the need to adjust, remove or reinstall firestop materials. The pathway shall be UL® Classified and/or FM Systems Approved and tested to the requirements of ASTM E814 (UL1479).

Specified Divisions

DIV. 7	07 84 00	Penetration Firestopping
DIV. 26	26 00 00	Electrical
DIV. 27	27 00 00	Communications

PAYS FOR ITSELF IN A FEW CHANGES... A ZERO MAINTENANCE SOLUTION



When compared to traditional sleeves sealed with sealant or putty, EZ-Path® will have paid for itself in just three cable changes or less. The savings will increase with each additional cable change.

- All-in-one design installs in minutes.
- Conveniently packaged kits for easy installation — no additional parts to order.
- Splits apart for old work.
- Wide range of accessories.
- Group pathways for additional capacity.
- Organizes and manages cables.
- Clean, professional, engineered appearance.
- Easy moves, adds and changes.
- Can be installed as the wall is being built.

CHOOSE THE RIGHT EZ-PATH® CONFIGURATION FOR YOUR CABLING NEEDS!



	Series 22	Series 33	Series 44
Height x Width Inches (mm)	1.5" x 1.5" (38 mm x 38 mm)	3.0" x 3.0" (76 mm x 76 mm)	4" x 4-5/8" (102 mm x 118 mm)
Length Inches (mm)	10.5" (267 mm)	10.5" (267 mm)	14" (356 mm)
Volume Expansion	40X	16X	16X
Can be Ganged	Up to 3	Up to 7	Up to 5 in walls Up to 16 in floors
Can be Lengthened	--	6" (152 mm) increments	--
Insert into Cored Hole	2" (51 mm)	4" (102 mm)	6" (153 mm)
Attached to Conduit	--	4" (102 mm)	--
Fire Rated in Walls	Up to 4 hours	Up to 4 hours	Up to 4 hours
Fire Rated in Floors	--	Up to 4 hours	Up to 4 hours
Approx. Max Cable Capacity	25 ±	120 ±	244 ±
Approx. Max Cable Capacity (Ganged)	75 ±	840 ±	1,220 ±
Approx. Max Cable Capacity (Grid)	--	--	3,904 ± in floors

Cable capacity estimates are based upon using CAT5. Cable diameters vary widely by manufacturer. Consult STI's cable estimator online for accurate estimates.
www.stifirestop.com/ezpath



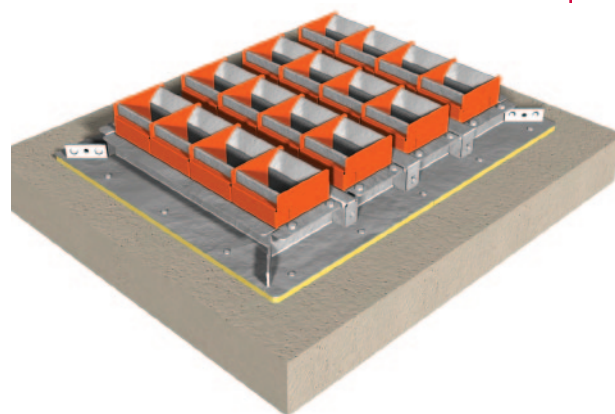
- Organize cables by type, use or trade.
- Install in walls or floors to provide managed portals to route cables.
- Install one or gang them up for additional capacity and better cable organization!



All pathway kits are conveniently packaged with 22, 33, and 44 Series EZ-PATH® Fire Rated Pathways, plates, gaskets and labels for installation!

MODULAR FLOOR GRID SYSTEM

- An EZ-Path® Solution for high volume cable penetrations through floors.
- A bolt-in solution for riser applications that brings the safety and simplicity of EZ-Path® to your vertical cable installations.
- The EZ-Path® Modular Floor Grid System can handle literally thousands of cables.
- Modular Floor Grid Systems utilize the high volume, EZ-Path® 44 Series Pathways installed in banks of four to provide your cabling systems with room to grow.



Sturdy steel grids mount one, two or four banks or pathways in built-in slots for a total of up to sixteen pathways through a single floor opening. A single bank Floor Grid comes complete with pathways. Multi-bank Modular Floor Grids are installed with firestop panels sealing each slot. As additional cable capacity is required, firestop panels are removed and pathway modules containing four pathways are installed in each slot.

For our easy-to-use installation guide on the complete EZ-PATH® Fire Rated Pathway product line, contact STI customer service or download a copy at www.stifirestop.com/literature.



ORDERING INFORMATION

UPC 730573-	CATALOG NUMBER	DESCRIPTION	MIN. QTY/ CASE QTY.
Series 22 EZ-Path® Fire-Rated Pathway Kits*			
00022	EZD22†	Series 22 - Fire-Rated Pathway Kit	6
Series 33 EZ-Path® Fire-Rated Pathway, Kits*, Accessories and Plate Packs**			
00004	EZD33FWS†	Series 33 - Fire-Rated Pathway Device	6
00034	EZDP33FWS	Series 33 - Square Kit - Device with square wall plate pack	4
00035	EZDP133CWK	Series 33 - Circular Kit - Device with circular wall plate pack	1
00005	EZD33E	Series 33 - Extension Module	1
00533	EZDP33WR	Series 33 - Retro-Fit Kit - Device with retro-fit wall plate pack	1
00835	EZDP133FK	Series 33 - Kick in Kit - Device with kick-in plate pack	1
00235	EZDP233GK	Series 33 - Two-Gang Kit - Two (2) Devices with two-gang plate pack	1
00335	EZDP333GK	Series 33 - Three-Gang Kit - Three (3) Devices with three-gang plate pack	1
00435	EZDP433GK	Series 33 - Four-Gang Kit - Four (4) Devices with four-gang plate pack	1
00436	EZDP433GK-C	Series 33 - Color Coded Four-Gang Kit Four (4) Devices (1-orange, 1-blue, 1-yellow, 1-white) with four-gang plate pack	1
00735	EZDP733GK	Series 33 - Seven-Gang Kit - Seven (7) Devices with seven-gang plate pack	1
00036	EZDP133CAK	Series 33 - Conduit Attachment Kit-Device with conduit attachment plate pack	1
00137	EZP133CW	Series 33 - Circular Wall Plate Pack	1
00133	EZP133W	Series 33 - Single Square Wall Plate Pack	1
00233	EZP233W	Series 33 - Double Wall Plate Pack	1
00333	EZP333W	Series 33 - Triple Wall Plate Pack	1
00433	EZP433W	Series 33 - Four-Gang Plate Pack	1
00733	EZP733W	Series 33 - Seven-Gang Plate Pack	1
00135	EZP133PC	Series 33 - One Pair (2) Positioning Clamps	1
00833	EZP133K	Series 33 - Single Kick-In Plate Pack - (For use with floor applications)	6
00535	EZP133R	Series 33 - Retro-Fit Mounting Plate Pack	1
00138	EZP133CA	Series 33 - Conduit Attachment Plate Pack	1
00933	RCM33	Series 33 - One Pair (2) Radius Control Modules	1
Series 44 EZ-Path® Fire-Rated Pathway, Kits*, Grid Assemblies, and Plate Packs**			
00007	EZD44	Series 44 - Fire-Rated Pathway Device	4
00044	EZDP44	Series 44 - Fire-Rated Pathway Kit - Device with single wall plate pack	1
00045	EZDP144FK	Series 44 - Floor Kit - Device with floor plate pack	1
00444	EZDG444	Series 44 - Single Bank Floor Grid - Four (4) Devices with floor frame	1
00048	EZD444MB	Series 44 - Single Bank of Devices - Four (4) Devices with hanger bracket	1
00845	EZDG844	Series 44 - Multi-slot Frame Kit for 8 Pathways - (Includes eight (8) Series 44 devices with EZG844)	1
00645	EZDG1644	Series 44 - Multi-slot Frame Kit for 16 Pathways - (Includes sixteen (16) Series 44 devices with EZG1644)	1
00144	EZP144W	Series 44 - Single Wall Plate Pack	1
00544	EZP544W	Series 44 - Multi-Gang Wall Plate Pack	1
00834	EZP144F	Series 44 - Split Floor Plate Pack	1
00844	EZG844	Series 44 - Multi-Slot Frame for Eight (8) Pathways	1
00644	EZG1644	Series 44 - Multi-Slot Frame for Sixteen (16) Pathways	1

* All Kits include appropriate quantity of pathways, wall plates, gaskets, labels, required set screws and an allen key. **All plate packs include wall plates, gaskets, labels, required set screws and an allen key.

† Available in custom colors on a special order basis in yellow, blue and white.

FIRESTOP COMPOSITE SHEET

COMPOSITE SHEET



Lightweight, easily fabricated panels surface mount to walls and floors to provide a neat, clean firestop seal for medium to large openings with a variety of penetrants in fire-rated floors and walls.

FEATURES & BENEFITS:

- Lighter and thinner - approximately 1/2 the weight and thickness of traditional composite sheet.
- Easier to fabricate - engineered with the installer in mind.
- Can be cut and installed with common sheet metal tools.
- Intumescent - expands up to 15 times when exposed to temperatures in excess of 350°F (177°C) compared to 8-10 times for competing brands. Forms a dense insulative char that minimizes heat transfer.
- Hole reduction - reduces large openings when used in conjunction with other SpecSeal® or EZ-Path® Firestop Products.
- Tested to ASTM E 814 (ANSI/UL 1479).
- Acoustically tested - reduces sound transmission.



APPLICATIONS

- Medium to large openings through common constructions.
- Single or multiple cable trays for power, voice, data.
- Bus ducts.
- Multiple metallic conduits & tubing. Multiple mixed penetrants of many types.
- Blank Openings (penetrants removed).
- Suitable for clean room/area environment.
- Combine with the EZ-PATH® System for cable penetrations through large openings.
- Plastic pipes.
- Insulated metallic pipes.
- Metal pipes.

ORDERING INFORMATION

UPC #	Part #	Description	Qty.	Case Qty.	Weight Each - lbs.
11628	CS1628	16 x 28 in. (41 x 71 cm) Composite Sheet	1	2	4.40
12436	CS2436	24 x 36 in. (61 x 92 cm) Composite Sheet	1	2	8.40
13636	CS3636	36 x 36 in. (92 x 92 cm) Composite Sheet	1	2	12.60
14136	CS3641	36 x 41 in. (92 x 104 cm) Composite Sheet	1	2	14.40
15228	CS2852	28 x 52 in. (71 x 132 cm) Composite Sheet	1	2	14.20



FIRESTOP MORTAR

SSM FIRESTOP MORTAR



A Lightweight, Cementitious, Fire-Rated Compound.

SpecSeal® Firestop Mortar is suitable for openings of all sizes. Its method of application makes it specifically useful for medium to large openings through concrete or masonry floors or walls with simple to very complicated combinations of penetrants.

FEATURES & BENEFITS:

- Light weight/low density - less forming and support required. Easy retrofit!
- Fast drying - forms come down faster!
- Economical - highest yield per pound means lower installed cost.
- Wide range of application - includes aluminum cable tray.
- Red color - easy identification and inspection.
- Chemical adhesion - reduces the need for expensive and time-consuming concrete fasteners.
- Trowelable and self-leveling.



APPLICATIONS

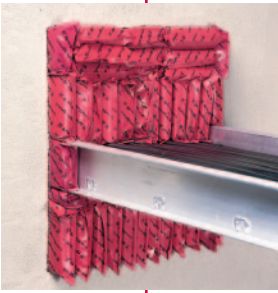
- Large openings through concrete floors and walls.
- Cable trays.
- Bus duct.
- Multiple pipes.
- Insulated pipes.
- Plastic pipes.
- Cables

ORDERING INFORMATION

UPC #	Part #	Description	Qty.	Case Qty.	Weight Each - lbs.
04106	SSM106	Mortar 6 gal. Pail (22 Lbs., 10 Kilos)	1	n/a	24.00
04200	SSM22B	Mortar Bag (22 Lbs., 10 Kilos)	1	n/a	23.00



SSB INTUMESCENT FIRESTOP PILLOWS



Compressible cushions can be easily installed and removed. The perfect firestop solution for medium to large openings including cable bundles, cable trays, bus ducts and multiple conduits.

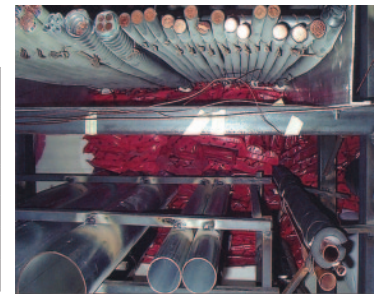
FEATURES & BENEFITS:

- Intumescent - expands in all directions for a tough, tight seal.
- Re-installable for easy retrofitting of cables.
- Single side application makes installation easy for tough access openings.
- Heat-sealed poly cover protects core and makes pillows slide in and out with ease.
- Superior air leakage ratings!
- Broad base of tested systems.
- UL Classified (up to 4 hr.).
- FM Approved.



APPLICATIONS

- Medium to large openings through common constructions.
- Loose cable for power, voice, data.
- Single or multiple cable trays for power, voice, data.
- Bus ducts.
- Multiple metallic conduits & tubing.
- Multiple, mixed penetrants of all types.



ORDERING INFORMATION

UPC #	Part #	Description	Qty.	Case Qty.	Weight Each - lbs.
06140	SSB14	Firestop Pillow 1"x 4"x 9" (2.5 x 10 x 23 cm)	1	20	0.18
06240	SSB24	Firestop Pillow 2"x 4"x 9" (5.0 x 10 x 23 cm)	1	10	0.27
06260	SSB26	Firestop Pillow 2"x 6"x 9" (5.0 x 15 x 23 cm)	1	22	0.35
06360	SSB36	Firestop Pillow 3"x 6"x 9" (7.6 x 15 x 23 cm)	1	16	0.48

FIRESTOP PUTTY

SSP INTUMESCENT FIRESTOP PUTTY



Non-hardening, intumescent putty is easily installed and removed making it the perfect choice for cable penetrations requiring occasional retrofitting.

FEATURES & BENEFITS:

- Non-hardening for easy installation and retrofitting of cables.
- Two-stage intumescence provides aggressive expansion.
- Highly adhesive: stays put!
- Unaffected by humidity, condensation, water.
- Soft, pliable, easy to install.
- Tested and proven acoustical properties.
- No tools required.
- UL Classified (up to 3 hr.)
- FM Approved.



APPLICATIONS

- Small to medium openings through common constructions.
- Single or multiple cables for power, voice, data.
- Single or multiple cable trays for power, voice, data.
- Sleeved openings for cable bundles
- Conduits.



ORDERING INFORMATION

UPC #	Part #	Description	Qty.	Case Qty.	Weight Each - lbs.
02100	SSP100	Putty 36 Cu. In. Tube (.6 L)	1	6	2.30
02101	SSP28	Putty 24 Cu. In. Tube (.39 L)	1	1	1.85

READY™ SLEEVE



A complete code compliant firestop sleeve assembly for new cable installations. Includes all mounting hardware and internal and external firestop sealing materials. Available in 1" (33 mm OD), 2" (60 mm OD), and 4" (114 mm OD) sizes with standard or large escutcheon plates.

FEATURES & BENEFITS:

- Complete! Includes sleeve, all mounting hardware, firestopping materials.
- Saves money by reducing expensive shop and field labor.
- Standard and large escutcheons available.
- Meets code requirements for internal/external firestop sealing.
- Meets code requirements for wall attachment.
- Built-in bushings protect cables.*
- Includes SpecSeal® Series SSP Intumescent Firestop Putty sufficient for 1" (25 mm) depth at both ends.
- UL Classified (up to 4 hr.)

* Standard for 2" (60 mm OD) and 4" (114 mm OD) sizes. Separate bushing provided for 1" (25 mm).



APPLICATIONS

- Protect, support and seal cables routed through rated and non-rated walls & floors.
- All common constructions up to 10" (250 mm) thick.
- Available trade sizes 1" (33 mm OD), 2" (60 mm OD), 4" (114 mm OD).
- Standard small escutcheons for accurate gypsum board openings.
- Large escutcheons for concrete or masonry openings.



ORDERING INFORMATION

UPC #	Part #	Description	Qty.	Case Qty.	Weight Each - lbs.
20100	FS100	1" (25 mm) Firestop Sleeve	1	6	1.00
20200	FS200	2" (51 mm) Firestop Sleeve	1	6	2.00
20400	FS400	4" (102 mm) Firestop Sleeve	1	6	4.00
20201	FS201	2" (51 mm) Firestop Sleeve w/ large escutcheon plates	1	n/a	2.90
20401	FS401	4" (102 mm) Firestop Sleeve w/ large escutcheon plates	1	n/a	4.80

READY™ SPLIT SLEEVE



Ready™ Sleeve convenience for existing cable installations. Split sleeve and two-piece wall plates allow sleeve to be assembled around cables and locked into the wall or floor. Available in 1" (33 mm OD), 2" (60 mm OD), and 4" (114 mm OD) sizes.

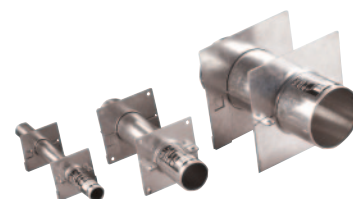
FEATURES & BENEFITS:

- Complete! Includes split sleeve, all mounting hardware, firestopping materials.
- Over-sized plates for larger or irregular openings.
- Built-in bushings protect cables.
- Meets code requirements for internal/external firestop sealing.
- Optional wall attachment points provided for sleeve stabilization.
- Includes SpecSeal® Firestop Putty as well as split external firestop gasket.
- UL Classified (up to 4 hr.).



APPLICATIONS

- New or existing cable installations through walls or floors.
- All common constructions up to 10" (250 mm) thick.
- Available trade sizes 1" (33 mm OD), 2" (60 mm OD), 4" (114 mm OD).
- Oversized or irregular openings.



ORDERING INFORMATION

UPC #	Part #	Description	Qty.	Case Qty.	Weight Each - lbs.
21000	FSR100	1" (25 mm) Split Firestop Sleeve	1	4	1.25
22000	FSR200	2" (51 mm) Split Firestop Sleeve	1	4	2.50
24000	FSR400	4" (102 mm) Split Firestop Sleeve	1	4	6.25

POWERSHIELD™ ELECTRICAL BOX INSERTS



When used within metallic switch and receptacle boxes, inserts are UL Tested and Classified to permit larger boxes and reduced spacing.

FEATURES & BENEFITS:

- Easy installation! Just peel and stick to inside of box.
- Can be installed before or after wall is closed.
- Non-conductive liner face.
- Easy retrofit installation.
- Low profile for minimum impact on box volume.
- Tested and proven acoustical properties.
- One step installation saves time and labor.



APPLICATIONS

- Single & multi-gang metallic boxes up to 14" (356 mm) long.
- A variety of non-metallic boxes.
- Plastic & steel faceplates.
- 1 & 2 hr. wood or steel stud walls.



ORDERING INFORMATION

UPC #	Part #	Description	Qty.	Case Qty.	Weight Each - lbs.
02500	EP44	Electrical Box Insert 3 3/4" x 3 3/4" x 1/8" pad	1	20	0.09
02505	EP45	Electrical Box Insert 4-1/4" x 4-1/4" x 1/8" pad	1	20	0.10

FIRESTOP PUTTY PADS

SSP INTUMESCENT PUTTY PADS



Externally applied to switch and receptacle boxes, pads are UL tested and Classified to permit larger boxes and reduced spacing in gypsum board walls.

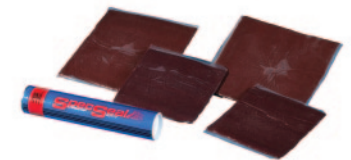
FEATURES & BENEFITS:

- Fits common 4S box with no cutting or trimming.
- Two-Stage intumescence provides aggressive expansion.
- Highly adhesive: stays put.
- Unaffected by humidity, condensation, water.
- Soft, pliable, easy to install.
- Tested and proven acoustical properties.
- Poly liner allows hands-off, clean installation.



APPLICATIONS

- Single & multi-gang metallic boxes up to 14" (356 mm) long.
- A variety of non-metallic boxes.
- Plastic & steel faceplates.
- 1 & 2 hr. wood or steel stud walls.



ORDERING INFORMATION

UPC #	Part #	Description	Qty.	Case Qty.	Weight Each - lbs.
02200	SSP4S	Putty Pad 7.25" x 7.25" x 3/16"	1	20	0.59
02300	SSP9S	Putty Pad 9.00" x 9.00" x 3/16"	1	20	0.99

FIRESTOP SPRAY

CABLE SPRAY



Water-based, spray-applied coating used to provide short term circuit integrity and improved flame spread characteristics for grouped electrical cables.

FEATURES & BENEFITS:

- Easy and economical to use.
- Water-based - easy cleanup, installation and disposal.
- Low friction formula - Less pump wear.
- Brushable for touch ups and spot repairs.



APPLICATIONS

- Encapsulate grouped cables.
- Apply as fire breaks in cable tray runs.



ORDERING INFORMATION

UPC #	Part #	Description	Qty.	Case Qty.	Weight Each - lbs.
07104	CS105	Cable Spray 5 gal. (1,155 Cu.In., 19.0 L) Pail	1	n/a	55.00

Distributed By:



STI is a member of the following industry organizations:



International
FireStop Council



Somerville, NJ 08876 USA
Toll Free: 800-992-1180
Fax: 908-526-9623
e-mail: specseal@stifirestop.com
www.stifirestop.com
ZSTI 3113 Rev: 10/2009

SpecSeal®, EZ-Path®, Triple S® and Speed Flex are registered trademarks of Specified Technologies Inc. FyreFlange™, Ready™, Powershield™, Fast Tack and High-Traffic™ are trademarks of Specified Technologies Inc. Pensil is a registered trademark of General Electric Company. UL® is a registered trademark of Underwriters Laboratories, Inc.

© Copyright 2008. All rights reserved.