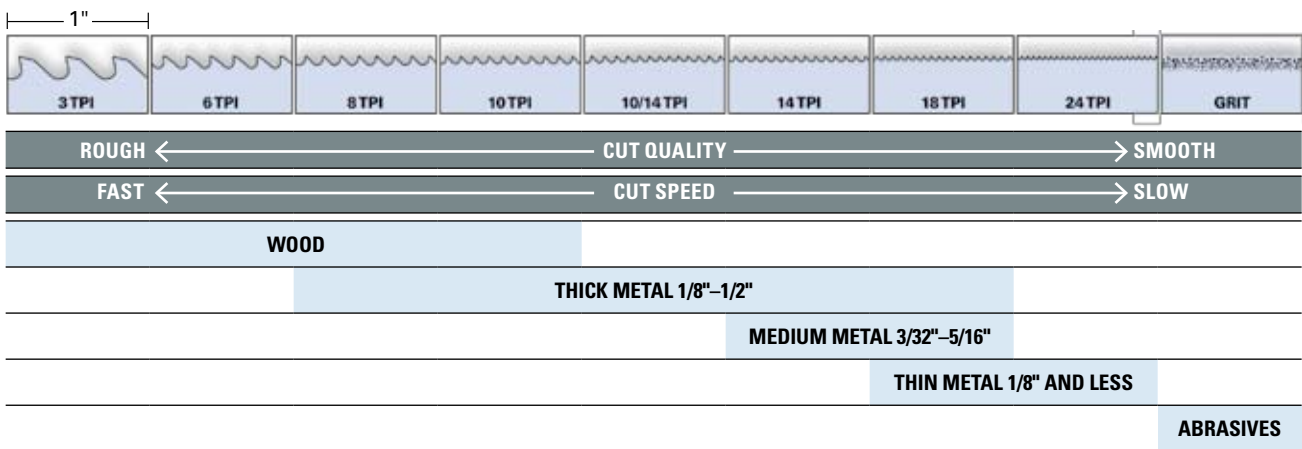


RECIPROCATING SAW BLADE SELECTION GUIDE

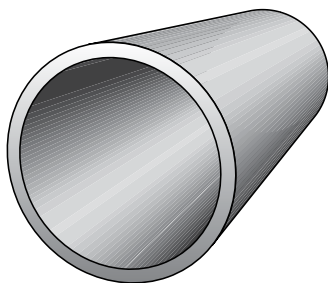
	WOOD	NAIL-EMBEDDED WOOD	NON-FERROUS METAL	DEMOLITION	FIRE & RESCUE	PLASTICS & COMPOSITES	THICK METAL	MEDIUM METAL	THIN METAL	DRYWALL/ PLASTER	CEMENT BOARD	CAST IRON	ABRASIVES
BEST	LENOX Gold®									CARBIDE TIPPED	LENOX DIAMOND™		
BETTER	BI-METAL	LAZER®	BI-METAL	BI-METAL			LAZER		BI-METAL	LENOX DIAMOND	CARBIDE GRIT		
GOOD	—	BI-METAL	—	—			BI-METAL		—	CARBIDE GRIT	—		

TEETH PER INCH SELECTION GUIDE

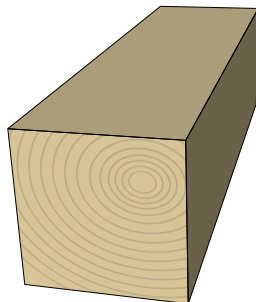


BLADE LENGTH SELECTION GUIDE

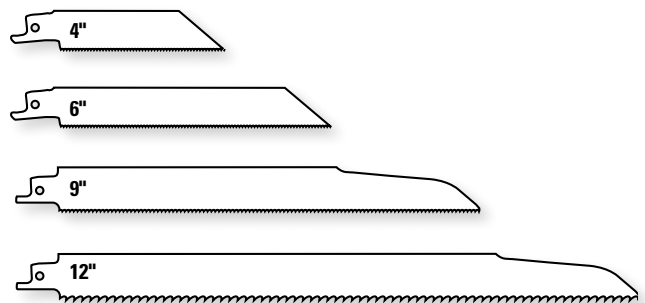
Always keep 2 teeth in the cut.



← WIDTH →



← WIDTH →



WIDTH OF MATERIAL + 3" = BLADE LENGTH
 EXAMPLE: 5" (WIDTH) + 3" = 8". USE AN 8" OR 9" BLADE