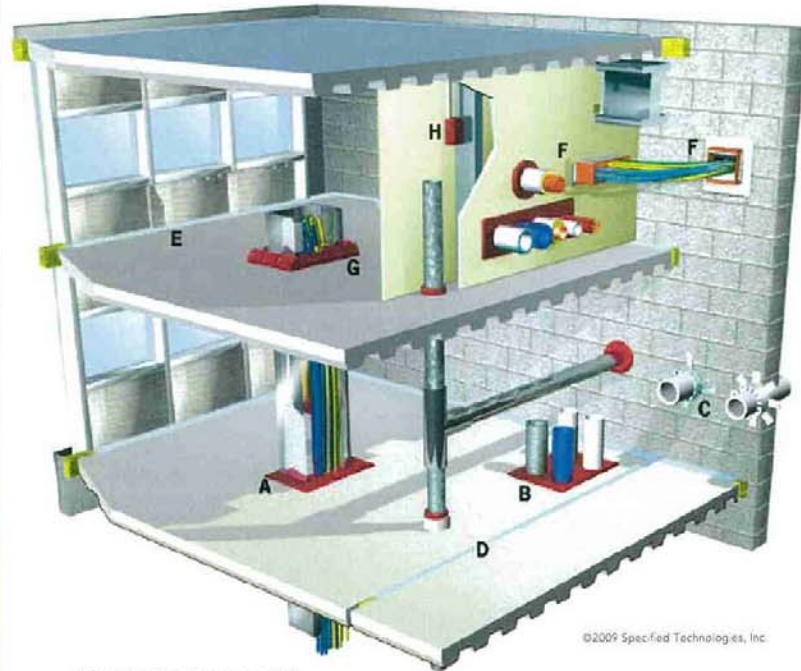


STI Firestop

Check out our
Firestop
Reference Shelf
for a link to
STI's full catalog



PRODUCT SELECTOR



©2009 Specified Technologies, Inc.

FIRESTOP SEALANTS



Triple S® Intumescent Sealant — Pg. 4

Premium grade intumescent firestop sealant featuring STI's patented two-stage intumescent technology. Triple S can be used in most common through-penetrations as well as a variety of membrane penetrations and construction joints.



LCI Intumescent Sealant — Pg. 4

Standard grade intumescent firestop sealant engineered to economically address many common through-penetration applications in light commercial construction.



LC Endothermic Sealant — Pg. 5

High quality, non-halogenated firestopping sealant designed for non-combustible penetrants in through-penetrations and construction joints.

PENSIL® Silicone Products — Pg. 7

A 100% silicone firestop caulk engineered to rapidly cure and resist washout (W Ratings) when used in exposed applications. Also used in construction joint applications.

RESIDENTIAL CAULK



WF300 Firestop Caulk — Pg. 5

Intumescent firestop caulk designed for sealing through-penetrations and gaps in fire resistance-rated wood frame construction.

SmokeBlock® E-136 Caulk — Pg. 5

Meets the requirement of ASTM E136 for use in non-rated applications for fireblocking and draftstopping.

FIRESTOP SPRAYS & JOINT SEALANT



ES Elastomeric Sealant — Pg. 6

Non-halogenated latex-based sealant designed to provide passive smoke and fire protection in construction joint applications.



AS Elastomeric Spray — Pg. 6

Water-based, spray applied coating for joints and certain through-penetrations in fire-rated walls or floors.

STI Firestop

PRODUCT SELECTOR

FIRESTOP SPRAYS & JOINT SEALANT



Fast Tack™ Firestop Spray — Pg. 7
Quick dry, firestop spray for use in curtain wall/ edge of slab, and general construction joints that are subject to movement.



PENSIL® Silicone Products — Pg. 7
A 100% silicone firestop caulk engineered to rapidly cure and resist washout (W Ratings) when used in exposed applications. Also used in through penetration applications.

SMOKE & ACOUSTICAL PRODUCTS



Smoke 'N' Sound Acoustical Spray — Pg. 8
Spray grade product for sealing openings in non-rated smoke barriers and partitions.



Smoke 'N' Sound Acoustical Sealant — Pg. 8
Sealant grade product for sealing openings in non-rated smoke barriers and partitions.

CONSTRUCTION JOINT SYSTEM



SpeedFlex™ Joint System — Pg. 9
A quick, economical alternative to using strips of mineral wool forming material in the joint area between the fire-rated wall assembly and the bottom of a steel deck or concrete floor.

FIRESTOP ANGLE



FyreFlange™ Duct Angle — Pg. 9
Duct support and firestopping in one product.

FIRESTOP COLLARS



Firestop Collars — Pg. 10
Ready-to-use firestop devices designed to collapse plastic pipe penetrations when exposed to fire conditions.



Range-Taking Collars — Pg. 10
Factory-manufactured device designed to seal plastic pipes penetrating fire resistance rated walls and floors. SpecSeal® RTC Collars are designed to allow a single collar to fit 3" and 4" trade size pipes (89 and 114 mm) and corresponding 3" and 4" couplings (102 and 127 mm).

WRAP STRIPS & RESTRAINING COLLARS



SSW Wrap Strips — Pg. 11
Intumescent, flexible wrap strips for through-penetrations.



WSC Restraining Collars — Pg. 11
Preformed metal restraining collars for use with SSW Wrap Strips in plastic pipe applications.

FIRESTOP ACCESSORIES



Firestop Accessories — Pg. 11
STI has several accessories available for installing firestop. Caulk tubes, mineral wool boards and even warning labels for labeling your barriers.

PATHWAYS



EZ-Path® Fire Rated Pathway — Pg. 12-15
A mechanical cable pathway system utilizing a self-contained, self-sealing firestop system. Easy moves, adds, and changes with no firestopping required ever. Three sizes and a full range of accessories adapt this system to virtually any application.

COMPOSITE SHEET



Composite Sheet — Pg. 16
Lightweight, firestop panels effectively seal medium to large openings with a variety of penetrants in fire-rated floors and walls.

FIRESTOP MORTAR



SSM Firestop Mortar — Pg. 16
Lightweight, cementitious, compound suitable for openings of all sizes in fire-rated construction.

FIRESTOP PILLOWS



SSB Intumescent Firestop Pillows — Pg. 17
Intumescent firestop pillows expand in all directions for a tough, tight seal and easy retrofit for hard-to-fill, multiple penetrants, and large openings.

FIRESTOP PUTTY



SSP Putty — Pg. 17
Two-stage intumescent, non-hardening putty for cable and pipe penetrations. Ideal in small to medium sized applications that will require re-entry.

FIRESTOP SLEEVES



Ready™ Sleeve — Pg. 18
Complete firestop sleeve assembly for new cable installations. Includes all mounting hardware and internal and external firestop sealing materials. Available in 1", 2", and 4" sizes with standard or large escutcheon plates.



Ready™ Split Sleeve — Pg. 18
Complete firestop split sleeve assembly for new or existing cable installations. Includes all mounting hardware and internal and external firestop sealing materials. Available in 1", 2", and 4" sizes.

PUTTY PADS



SSP Putty Pads — Pg. 19
When used with both metallic and non-metallic switch and receptacle boxes, pads are UL Tested and Classified to permit larger boxes and reduced spacing.

ELECTRICAL BOX INSERTS



Powershield™ Electrical Box Inserts — Pg. 19
When used within metallic switch and receptacle boxes, inserts are UL tested and Classified to permit larger boxes and reduced spacing.

FIRE PROTECTIVE CABLE COATING



Cable Spray — Pg. 19
Water-based, spray applied coating used to provide short term circuit integrity and improved flame spread characteristics for grouped electrical cables.