

## Pro-Cut was Key Player in Re-Opening of Route 81 after Tanker Fire

On Thursday, May 9, 2013, at about 6:10 a.m., a tanker truck that was fully loaded with 5,000 gallons of diesel fuel overturned on the I-81 northbound ramp to Route 322 west, state police said. The resulting fire and explosion turned central Pennsylvania into a traffic nightmare and seriously damaged a section of a ramp and part of Rt. 322, closing I-81 in both directions.

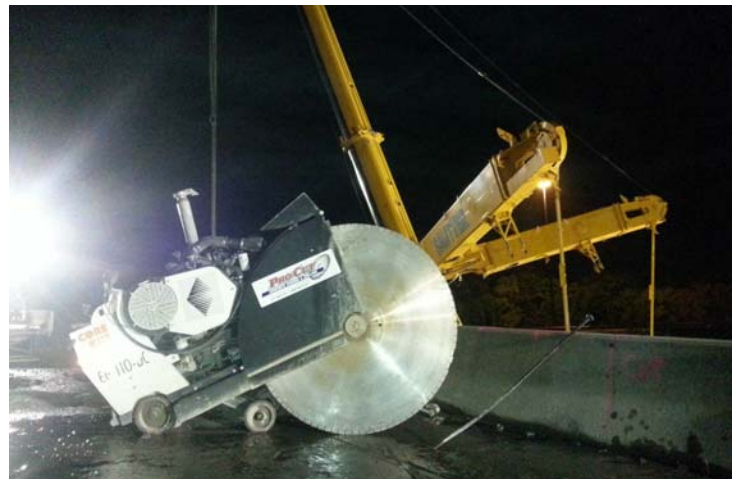


PennDOT had people on the scene before the fire was extinguished, and engineers assessed the damage and determined what needed to be removed for public safety. A heavy and highway contractor was hired to remove the damaged section. On Saturday, May 11, Pro-Cut Concrete Sawing & Drilling was contacted to provide assistance. We sent three cutting teams, who worked in conjunction with the crews who were already on site.

Pro-Cut was part of the solution to get Route 81 traffic flowing again, and we can also be part of the solution on your projects.



Pro-Cut teams use flat saws to remove a 168-foot long span of the bridge deck



A Super Deep Cut floor saw with a 72" diamond blade was used to cut the parapets



